

COORDINATE SWITCH, 22MM, ROUND, PLASTIC WITH METAL FRONT RING, BLACK, 2 SWITCH POSITIONS, VERTICAL, MOM. CONTACT TYPE, WITH MECHANICAL INTERLOCK






Figure similar

Product brand name	SIRIUS ACT
Product designation	Coordinate switches
Product type designation	3SU1

Actuator	
Design of the operating mechanism	with mechanical interlocking
Manner of function of the actuating element	Momentary contact type
Direction of actuation	Vertical
Color	
• of the actuating element	black
Material of the actuating element	plastic
Shape of the actuating element	Extended handle
Outer diameter of the actuating element	30.5 mm
Type of unlocking device	push-to-unlatch mechanism
Number of switching positions	2

Front ring	
Product component front ring	Yes
Design of the front ring	high

<b>Material of the front ring</b>	Metal, matt
<b>Color of the front ring</b>	sand gray
<b>General technical data</b>	
<b>Protection class IP</b>	IP65, IP67
<b>Shock resistance</b>	Sinusoidal half-wave 50 g / 11 ms
<ul style="list-style-type: none"> <li>• acc. to IEC 60068-2-27</li> <li>• for railway applications acc. to DIN EN 61373</li> </ul>	Category 1, Class B
<b>Vibration resistance</b>	10 ... 500 Hz: 5g
<ul style="list-style-type: none"> <li>• acc. to IEC 60068-2-6</li> <li>• for railway applications acc. to DIN EN 61373</li> </ul>	Category 1, Class B
<b>Operating frequency maximum</b>	3 600 1/h
<b>Mechanical service life (switching cycles)</b>	250 000
<ul style="list-style-type: none"> <li>• as operating period per direction of actuation typical</li> </ul>	
<b>Equipment marking</b>	S
<ul style="list-style-type: none"> <li>• acc. to DIN EN 61346-2</li> <li>• acc. to DIN EN 81346-2</li> </ul>	S
<b>Auxiliary circuit</b>	
<b>Number of NC contacts</b>	0
<ul style="list-style-type: none"> <li>• for auxiliary contacts</li> </ul>	
<b>Number of NO contacts</b>	0
<ul style="list-style-type: none"> <li>• for auxiliary contacts</li> </ul>	
<b>Number of CO contacts</b>	0
<ul style="list-style-type: none"> <li>• for auxiliary contacts</li> </ul>	
<b>Ambient conditions</b>	
<b>Ambient temperature</b>	-25 ... +70 °C
<ul style="list-style-type: none"> <li>• during operation</li> <li>• during storage</li> </ul>	-40 ... +80 °C
Environmental category during operation acc. to IEC 60721	3M6, 3S2, 3B2, 3C3, 3K6 (with relative air humidity of 10 ... 95 %)
<b>Installation/ mounting/ dimensions</b>	
<b>Height</b>	30.5 mm
<b>Width</b>	30.5 mm
<b>Shape of the installation opening</b>	round
<b>Mounting diameter</b>	22.3 mm
<b>Positive tolerance of installation diameter</b>	0.4 mm
<b>Mounting height</b>	75.6 mm
<b>Installation width</b>	30.5 mm
<b>Installation depth</b>	25.5 mm
<b>Certificates/approvals</b>	

General Product Approval	Declaration of Conformity	Test Certificates		other	
 CSA	 UL	 EG-Konf.	<a href="#">Declaration of the Compliance with the order</a>	<a href="#">Special Test Certificate</a>	<a href="#">Confirmation</a>

#### Further information

**Information- and Downloadcenter (Catalogs, Brochures,...)**

<http://www.siemens.com/industrial-controls/catalogs>

**Industry Mall (Online ordering system)**

<https://mall.industry.siemens.com/mall/en/en/Catalog/product?mlfb=3SU1030-7BD10-0AA0>

**Cax online generator**

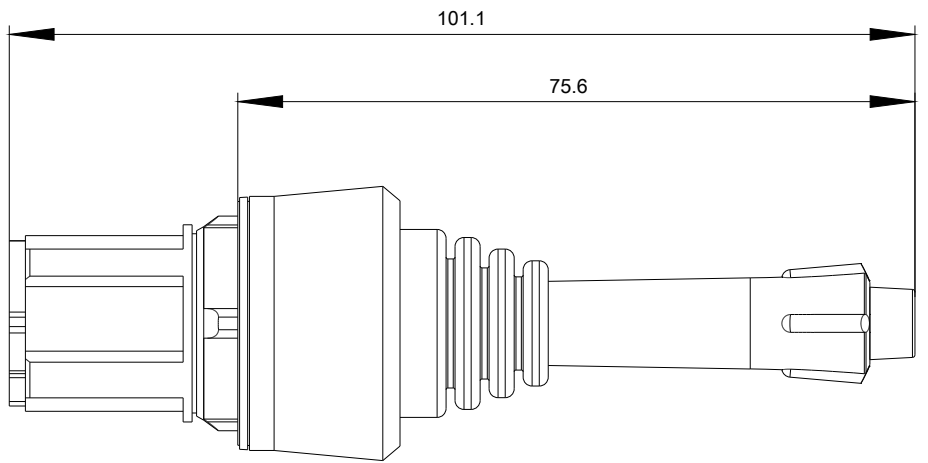
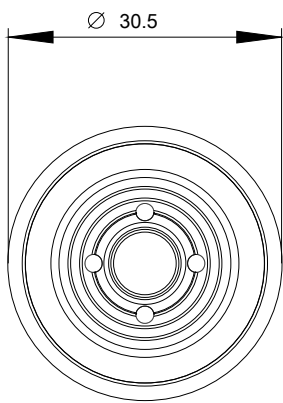
<http://support.automation.siemens.com/WW/CAXorder/default.aspx?lang=en&mlfb=3SU1030-7BD10-0AA0>

**Service&Support (Manuals, Certificates, Characteristics, FAQs,...)**

<https://support.industry.siemens.com/cs/ww/en/ps/3SU1030-7BD10-0AA0>

**Image database (product images, 2D dimension drawings, 3D models, device circuit diagrams, EPLAN macros, ...)**

[http://www.automation.siemens.com/bilddb/cax\\_de.aspx?mlfb=3SU1030-7BD10-0AA0&lang=en](http://www.automation.siemens.com/bilddb/cax_de.aspx?mlfb=3SU1030-7BD10-0AA0&lang=en)



last modified:

07/10/2017