






LV HRC BUS MOUNT.FUSE BASE 690V 1
POLE,1000A,SIZE4 FLAT-TYPE CONNECTION

Similar to image

Technical data:

Design type		-
Product component / Retracting-equipment		No
Type of fixing/fixation / Runner Mondays		No
Current / for AC / rated value	A	1,250
Number of poles		1

Certificates/approvals:

General Product Approval	Declaration of Conformity	Test Certificates	other
 GOST	 KEMA	 EG-Konf.	Special Test Certificate Type Test Certificates/Test Report Environmental Confirmations

Further information:

Information- and Downloadcenter (Catalogs, Brochures,...)

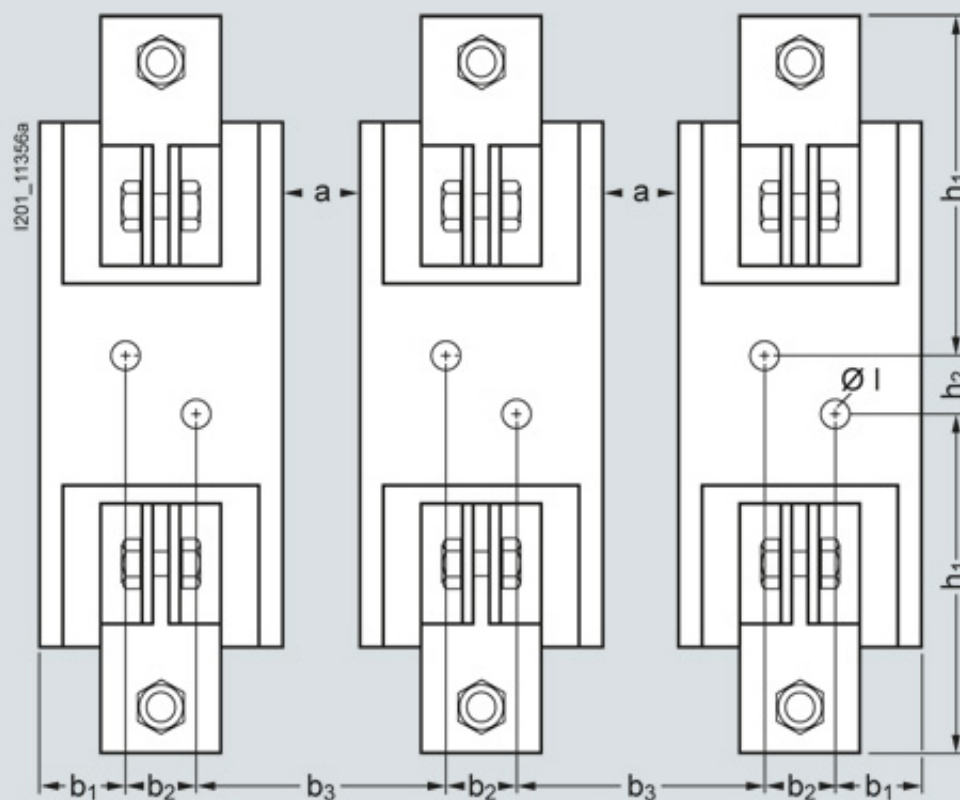
<http://www.siemens.com/lowvoltage/catalogs>

Industry Mall (Online ordering system)

<http://www.siemens.com/lowvoltage/mall>

Service&Support (Manuals, Certificates, Characteristics, FAQs,...)

<http://support.automation.siemens.com/WW/view/en/3NH3530/all>



Sizes	Type	b_1	b_2	b_3	h_1	h_2	$\varnothing I$
4	3NH3 530	36	30	95	141	25	13

Note: These LV HRC fuse bases are mounted without phase barriers.
A minimum clearance of $a = 25 \text{ mm}$ is required.

last change:

Mar 4, 2013