



Figure similar

General technical data:	
product brandname	SIRIUS
Product designation	Continuous light element
Design of the optical signal	continuous light
Type of voltage of the operating voltage	AC/DC
Operating voltage	
• 1 at DC rated value	24 V
• 1 at AC at 50 Hz rated value	24 V
• 1 at AC at 60 Hz rated value	24 V
Relative positive tolerance of the operating voltage	10 %
Relative negative tolerance of the operating voltage	-10 %
Service life of LED	100 000 h
Equipment marking	
• acc. to DIN EN 61346-2	P
• acc. to DIN EN 81346-2	P
Mechanical data:	
Outer diameter of the signal column element	50 mm

Lamp:	
Product component Light source	Yes
Type of light source	LED
Light intensity	1.5 cd
Light intensity	1.01 ... 2.05 cd

Ambient conditions:	
Ambient temperature during operation	-20 ... +50 °C
Protection class IP	IP54
Height	67 mm
Width	52 mm

### Certificates/approvals

General Product Approval	EMC	Declaration of Conformity	other
--------------------------	-----	---------------------------	-------



[Confirmation](#)

### Further information

**Information- and Downloadcenter (Catalogs, Brochures,...)**

<http://www.siemens.com/industrial-controls/catalogs>

**Industry Mall (Online ordering system)**

<https://mall.industry.siemens.com/mall/en/en/Catalog/product?mlfb=8WD4220-5AD>

**Cax online generator**

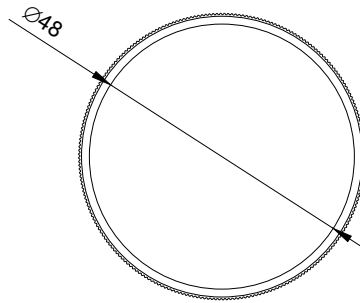
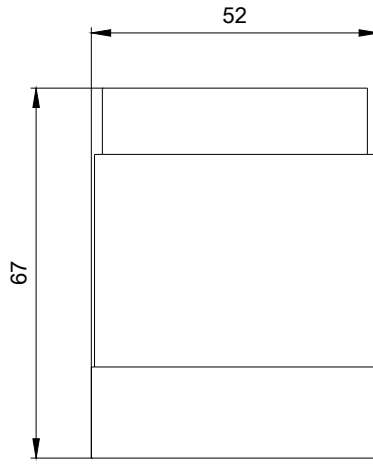
<http://support.automation.siemens.com/WW/CAXorder/default.aspx?lang=en&mlfb=8WD4220-5AD>

**Service&Support (Manuals, Certificates, Characteristics, FAQs,...)**

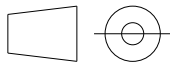
<https://support.industry.siemens.com/cs/ww/en/ps/8WD4220-5AD>

**Image database (product images, 2D dimension drawings, 3D models, device circuit diagrams, EPLAN macros, ...)**

[http://www.automation.siemens.com/bilddb/cax\\_de.aspx?mlfb=8WD4220-5AD&lang=en](http://www.automation.siemens.com/bilddb/cax_de.aspx?mlfb=8WD4220-5AD&lang=en)



last modified:



W9.4444; 8WD42.-...\_ALL  
 W6.8611; 8WD42.-...\_ALL  
 07/26/2017