

SWITCH DISCONNECTOR 3VA1 IEC FRAME 250 4-POLE SD100,
IN=250A WITHOUT OVERLOAD PROTECTION WITHOUT SHORT
CIRCUIT PROT. BUSBAR CONNECTION



Model	
product brand name	SENTRON
Product designation	Switch disconnecter
Design	in MCCB design
Number of poles	4
Design of the auxiliary release	without
Design of the auxiliary switch	Without
General technical data	
Tension assignée d'isolement Ui	800 V
Max. rated operational voltage Ue with AC 50/60Hz	690 V
Max. rated operational voltage Ue with DC	600 V
Active power loss / for rated value of the current / at AC / in hot operating state / per device	57 W
Mechanical service life (switching cycles) / typical	15 000
Electricity	
Courant permanent assigné Iu	250 A
Mechanical Design	
Height	158 mm

Width	140 mm
Depth	70 mm

Connections	
Arrangement of electrical connectors / for main current circuit	Front terminal
Type of electrical connection / for main current circuit	busbar connection

Auxiliary circuit	
Product component	
• undervoltage release	No
• Voltage trigger	No
• undervoltage release with leading contact	No
• Trip indicator	No
Number of auxiliary contacts as changeover contacts	0

Accessories	
Product expansion / optional / motor drive	Yes

Environmental conditions	
Protection class IP / on the front	IP40
Ambient temperature	
• during operation / minimum	-25 °C
• during operation / maximum	70 °C
• during storage / minimum	-40 °C
• during storage / maximum	80 °C

Certificates	
Equipment marking / acc. to DIN EN 81346-2	Q

General Product Approval	EMC	Declaration of Conformity	other
--------------------------	-----	---------------------------	-------



[RCM](#)



[sonstig](#)

Further information

Information- and Downloadcenter (Catalogs, Brochures,...)

<http://www.siemens.com/lowvoltage/catalogs>

Industry Mall (Online ordering system)

<https://eb.automation.siemens.com/mall/en/WW/Catalog/Product/3VA12251AA420AA0>

Service&Support (Manuals, Certificates, Characteristics, FAQs,...)

<http://support.automation.siemens.com/WW/view/en/3VA12251AA420AA0/all>

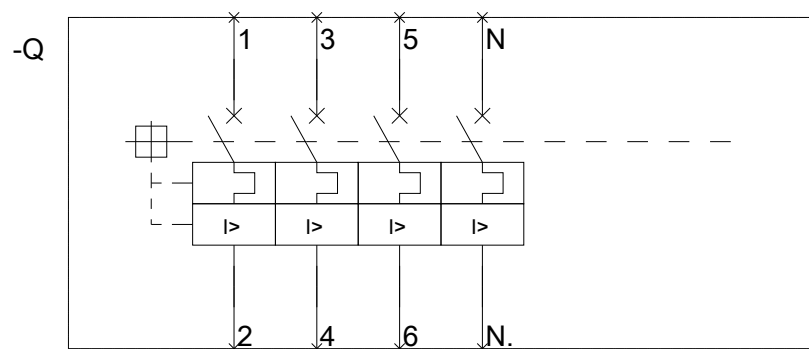
Image database (product images, 2D dimension drawings, 3D models, device circuit diagrams, ...)

http://www.automation.siemens.com/bilddb/cax_en.aspx?mlfb=3VA12251AA420AA0

CAX-Online-Generator

<http://www.siemens.com/cax>

<http://ausschreibungstexte.siemens.com/tiplv>



last modified:

05.12.2015