

LED MODULE WITH INTEGRATED LED, RED, SOLDER
TERMINAL, FOR PCB MOUNTING



Figure similar

Product brand name	SIRIUS ACT
Product designation	LED module
Product type designation	3SU1

General technical data

Product component <ul style="list-style-type: none"> • diode • lamp transformer • Light source • series resistor 	<ul style="list-style-type: none"> Yes No Yes No
Insulation voltage <ul style="list-style-type: none"> • rated value 	<ul style="list-style-type: none"> 30 V
Degree of pollution	<ul style="list-style-type: none"> 3
Type of voltage <ul style="list-style-type: none"> • of the operating voltage • for actuation 	<ul style="list-style-type: none"> DC DC
Surge voltage resistance rated value	<ul style="list-style-type: none"> 0.8 kV
Consumed current	

<ul style="list-style-type: none"> • maximum 	20 mA
Shock resistance	
<ul style="list-style-type: none"> • acc. to IEC 60068-2-27 • for railway applications acc. to DIN EN 61373 	Sinusoidal half-wave 50 g / 11 ms Category 1, Class B
Vibration resistance	
<ul style="list-style-type: none"> • acc. to IEC 60068-2-6 • for railway applications acc. to DIN EN 61373 	10 ... 500 Hz: 5g Category 1, Class B
Operating period typical	100 000 h
Equipment marking	
<ul style="list-style-type: none"> • acc. to DIN EN 61346-2 • acc. to DIN EN 81346-2 	P P

Main circuit	
Operating voltage	
<ul style="list-style-type: none"> • at DC — rated value 	5 ... 5 V
Operating voltage 1	
<ul style="list-style-type: none"> • at DC rated value 	5 V
Relative positive tolerance of the operating voltage	20 %
Relative negative tolerance of the operating voltage	20 %

Connections/Terminals	
Type of electrical connection	Socket connection (THT)

Lamp	
Type of light source	LED
Color of the light source	red
Light intensity	450 ... 1 120 mcd

Ambient conditions	
Ambient temperature	
<ul style="list-style-type: none"> • during operation • during storage 	-25 ... +70 °C -40 ... +80 °C
Environmental category during operation acc. to IEC 60721	3M6, 3S2, 3B2, 3K6 (with relative air humidity of 10 ... 95 %, no condensation in operation permitted)

Installation/ mounting/ dimensions	
Mounting type	
<ul style="list-style-type: none"> • of modules and accessories 	Printed circuit board
Height	8.1 mm
Width	8.1 mm
Depth	30.6 mm

Certificates/approvals	
-------------------------------	--

General Product Approval				Declaration of Conformity	Test Certificates
 CCC	 CSA	 UR		 EG-Konf.	Declaration of the Compliance with the order

Test Certificates	other
Special Test Certificate	Confirmation

Further information

Information- and Downloadcenter (Catalogs, Brochures,...)

<http://www.siemens.com/industrial-controls/catalogs>

Industry Mall (Online ordering system)

<https://mall.industry.siemens.com/mall/en/en/Catalog/product?mlfb=3SU1401-3BA20-5AA0>

Cax online generator

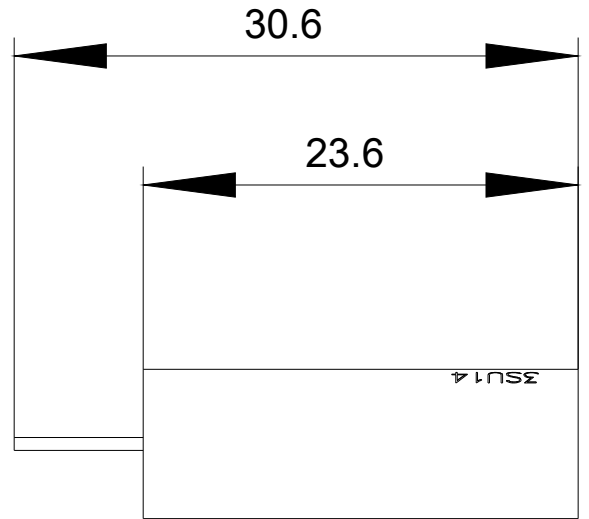
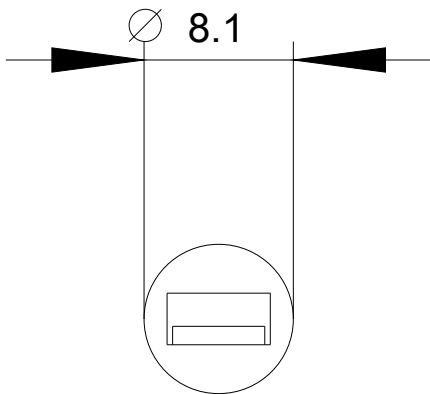
<http://support.automation.siemens.com/WW/CAXorder/default.aspx?lang=en&mlfb=3SU1401-3BA20-5AA0>

Service&Support (Manuals, Certificates, Characteristics, FAQs,...)

<https://support.industry.siemens.com/cs/ww/en/ps/3SU1401-3BA20-5AA0>

Image database (product images, 2D dimension drawings, 3D models, device circuit diagrams, EPLAN macros, ...)

http://www.automation.siemens.com/bilddb/cax_de.aspx?mlfb=3SU1401-3BA20-5AA0&lang=en



last modified:

07/10/2017