



Figure similar

SWITCH DISCONNECTOR 63A, SIZE 1, 3-POLE
LATERAL DRIVE LEFT BASIC UNIT WITHOUT
HANDLE BOX TERMINAL

Model		
product brand name		SENTRON
Product designation		Switching device
Design of the product		3KD switch disconnectors
Design of the operating mechanism		without
Design of handle		without
Type of the driving mechanism / motor drive		No
General technical data		
Number of poles		3
Type of device		fixed mounting
circuit-breaker / Design		3KD2
Mechanical service life (switching cycles) / typical		15 000
Overvoltage category		III
Voltage		
Insulation voltage / Rated value	V	1 000
Surge voltage resistance / Rated value	kV	8
Protection class		
Protection class IP		IP20
Protection class IP / on the front		IP20
Dissipation		
Active power loss		
<ul style="list-style-type: none"> with conventional rated thermal current / per pole 	W	2

Electricity

Continuous current

• Rated value	A	63
• at 40 °C / Rated value	A	63
• at 45 °C / Rated value	A	63
• at 50 °C / Rated value	A	63
• at 55 °C / Rated value	A	63
• at 60 °C / Rated value	A	63
• at 65 °C / Rated value	A	63
• at 70 °C / Rated value	A	63

Short-time current resistance (I _{cw}) / limited to 1 s / Rated value	kA	3
---	----	---

Main circuit

Operating power

• at AC-23 A / at 400 V / at 50/60 Hz / Rated value	kW	30
• at AC-23 A / at 500 V / at 50/60 Hz / Rated value	kW	37
• at AC-23 A / at 690 V / at 50/60 Hz / Rated value	kW	55

Operating voltage

• with AC / at 50/60 Hz / Rated value	V	690
---------------------------------------	---	-----

Auxiliary circuit

Number of CO contacts / for auxiliary contacts		3
Number of NC contacts / for auxiliary contacts		0
Number of NO contacts / for auxiliary contacts		0

Suitability

Suitability for use

• Main switch	Yes
• switch disconnecter	Yes
• EMERGENCY OFF switch	Yes
• safety switch	Yes
• maintenance/repair switch	Yes

Product details

Product feature / interlock		No
-----------------------------	--	----

Product component

• Trip indicator	No
• Voltage trigger	No
• undervoltage release	No
• undervoltage release with leading contact	No

Product expansion

- Auxiliary switch
- optional
 - motor drive
 - Voltage trigger

Yes

No

No

Connections

Type of electrical connection

- for main current circuit

Box terminal

Mechanical Design

Height

mm

119

Width

mm

103.3

Depth

mm

69.5

mounting position

any

Mounting type

Floor mounting and snap-on mounting to 35 mm standard mounting rail

Mounting type

- front mounting with 4-hole attachment
- front mounting with central attachment
- rail mounting

No

No

Yes

Net weight

g

750

Environmental conditions

Degree of pollution

3

Ambient temperature

- during operation / minimum
- during operation / maximum
- during storage / minimum
- during storage / maximum

°C

-25

°C

70

°C

-50

°C

80

Certificates

Equipment marking / acc. to DIN EN 61346-2

Q

Declaration of Conformity



EG-Konf.

Further information

Information- and Downloadcenter (Catalogs, Brochures,...)

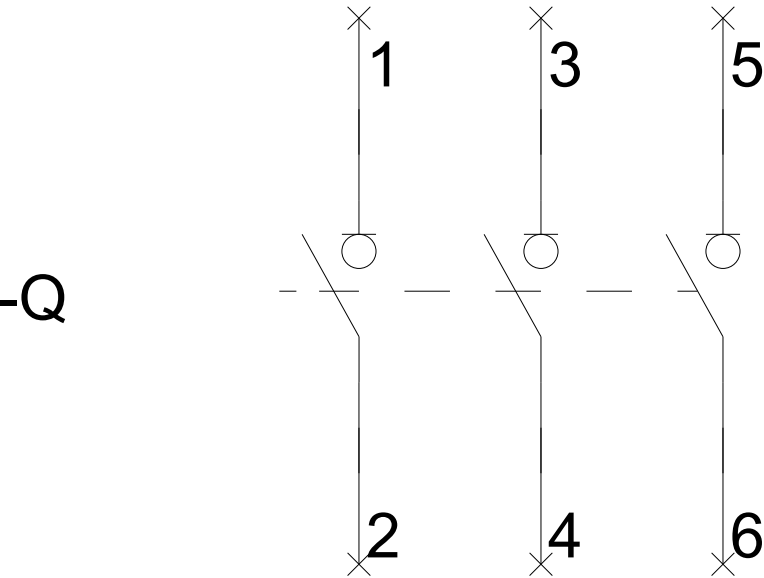
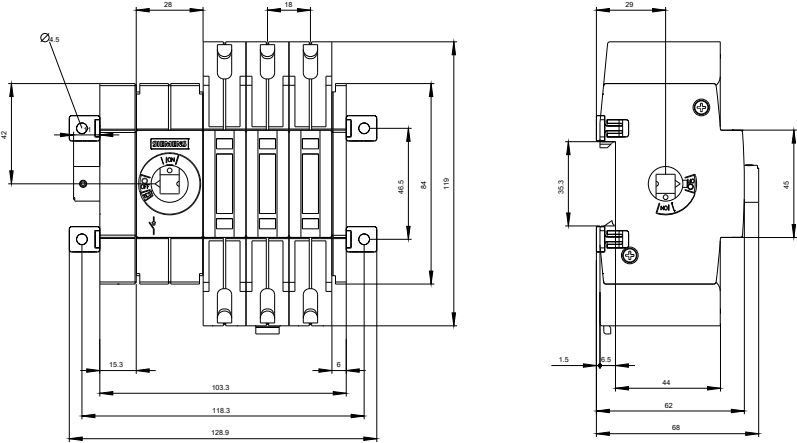
<http://www.siemens.com/lowvoltage/catalogs>

Industry Mall (Online ordering system)

<https://eb.automation.siemens.com/mall/en/WW/Catalog/Product/3KD26342ME100>

Service&Support (Manuals, Certificates, Characteristics, FAQs,...)

<http://support.automation.siemens.com/WW/view/en/3KD26342ME100/all>



last modified:

05.05.2015