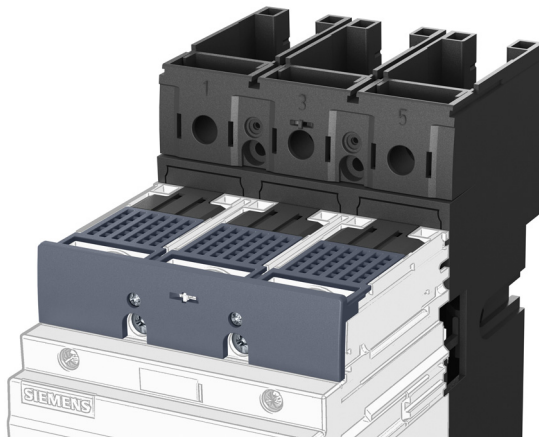


Steckeinheit, Komplettausatz
 Plug-in unit, Complete kit
 Unité enfichable, kit complet
 Unidad enchufable, kit completo
 Unità ad innesto, kit completo
 Unidade de encaixe, conjunto completo
 Geçme ünite, komple set
 Сменный блок, комплект деталей
 Człon wtykowy, kompletny zestaw
 插入式结构单元, 完整套件

3VA9... - 0KP00



IEC 60947



Betriebsanleitung
 Operating Instructions
 Instructions de service
 Instructivo
 Istruzioni operative
 Instruções de Serviço
 İşletme kılavuzu
 Руководство по эксплуатации
 Instrukcja obsługi
 使用说明

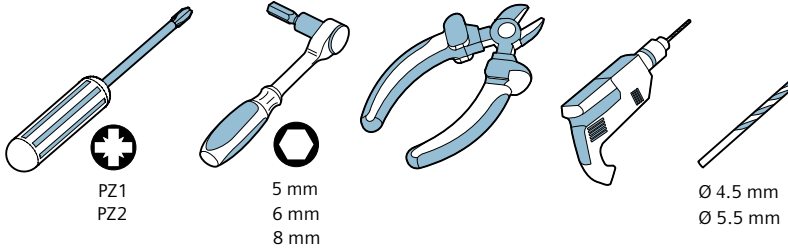
DE	GEFAHR		<p>Gefährliche Spannung. Lebensgefahr oder schwere Verletzungsgefahr. Vor Beginn der Arbeiten Anlage und Gerät spannungsfrei schalten. Die Installations- und Wartungsarbeiten an diesem Gerät dürfen nur von einer autorisierten Elektrofachkraft ausgeführt werden.</p>
EN	DANGER		<p>Hazardous voltage. Will cause death or serious injury. Turn off and lock out all power supplying this device before working on this device. Installation and maintenance work on this device may only be carried out by an authorized electrician.</p>
FR	DANGER		<p>Tension électrique. Danger de mort ou risque de blessures graves. Mettre hors tension avant d'intervenir sur l'appareil. Les travaux d'installation et d'entretien de cet appareil doivent uniquement être réalisés par une personne qualifiée en électricité.</p>
ES	PELIGRO		<p>Tensión peligrosa. Puede causar la muerte o lesiones graves. Desconectar la alimentación eléctrica antes de trabajar en el equipo. Las tareas de instalación y mantenimiento de este equipo solo puede llevarlas a cabo un un electricista autorizado.</p>
IT	PERICOLO		<p>Tensione pericolosa. Può provocare morte o lesioni gravi. Scollegare l'alimentazione prima di eseguire interventi sull'apparecchiatura. L'installazione e la manutenzione di questo apparecchio devono essere effettuati solo da specialisti dell'elettronica autorizzati.</p>
PT	PERIGO		<p>Tensão perigosa. Perigo de morte ou ferimentos graves. Desligue a alimentação elétrica e proteja contra o religamento, antes de iniciar o trabalho no equipamento. Os trabalhos de instalação e manutenção neste equipamento somente podem ser realizados por electricistas autorizados.</p>
TR	TEHLİKE		<p>Tehlikeli gerilim. Ölüm tehlikesi veya ağır yaralanma tehlikesi. Çalışmalara başlamadan önce, sistemin ve cihazın gerilim beslemesini kapatınız. Bu cihazın montajı ve bakımı yalnız yetkili bir elektrik teknisyeni tarafından yapılmalıdır.</p>
PY	ОПАСНО		<p>Опасное напряжение. Опасность для жизни или возможность тяжелых травм. Перед началом работ отключить подачу питания к установке и к устройству. Работы по монтажу и техническому обслуживанию данного устройства должны производиться уполномоченным специалистом по электротехнике.</p>
PL	ZAGROŻENIE		<p>Niebezpieczne napięcie. Niebezpieczeństwo poważnych obrażeń lub utraty życia. Przed rozpoczęciem prac wyłączyć zasilanie instalacji i urządzenia energią elektryczną. Prace instalacyjne i konserwacyjne na tym urządzeniu może przeprowadzać wyłącznie posiadający odpowiednie kwalifikacje elektryk.</p>
中文	危险		<p>危险电压。可能导致生命危险或重伤危险。 操作设备时必须确保切断电源。该设备的安装和维护工作仅能由具备专业资格的 电工完成。</p>

Technical Support:

Internet: <http://www.siemens.com/lowvoltage/technical-support>



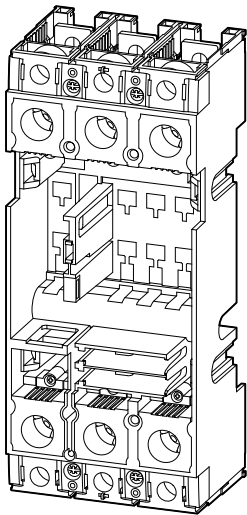
Notwendige Werkzeuge / Necessary tools / Outils nécessaires / Herramientas requeridas / 必要工具



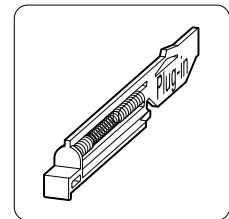
cal. ISO 6789



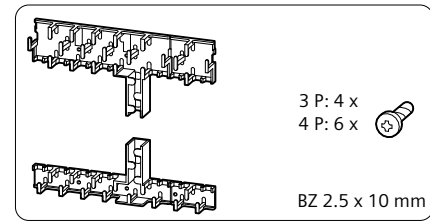
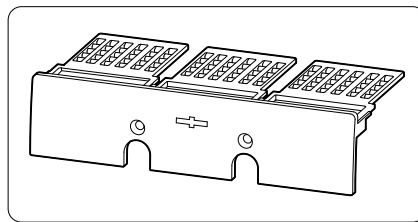
Lieferumfang / Scope of delivery / Etendue de la livraison / Alcance de suministro / 供货范围



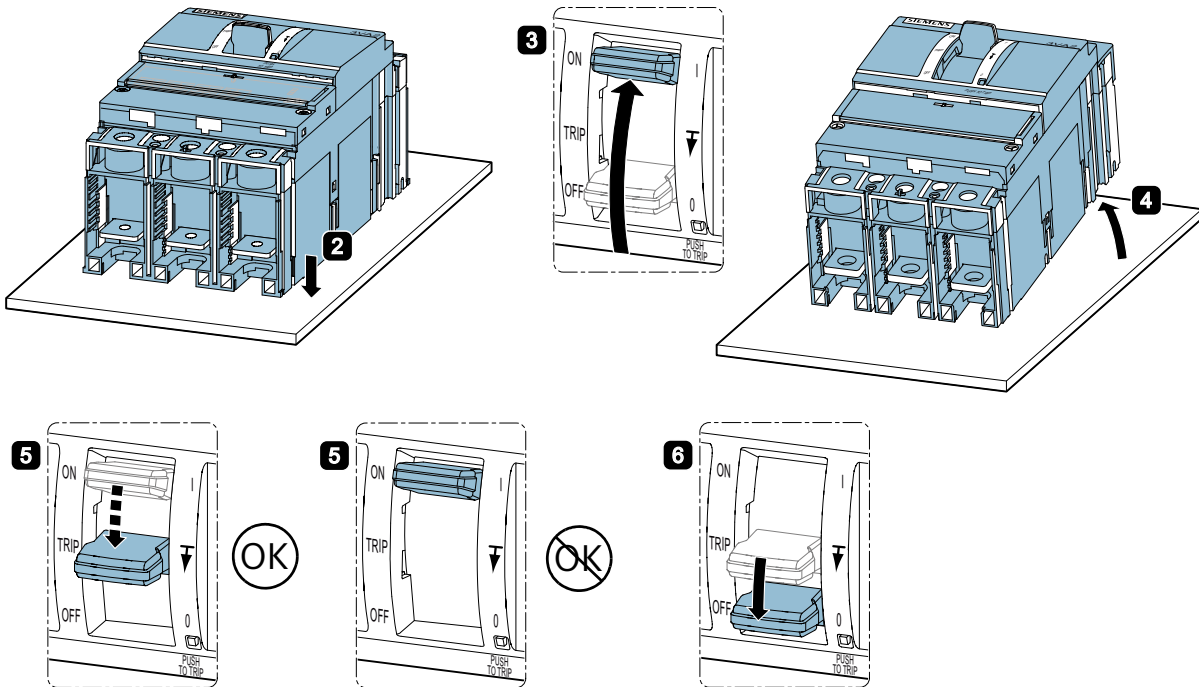
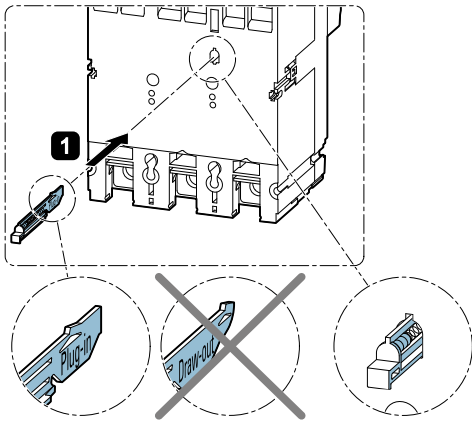
		3P	4P
3VA1	100 / 160	3VA9113 - 0KP00	3VA9114 - 0KP00
	250	3VA9213 - 0KP00	3VA9214 - 0KP00
3VA2	100 / 160 / 250	3VA9123 - 0KP00	3VA9124 - 0KP00
	400 / 630	3VA9323 - 0KP00	3VA9324 - 0KP00

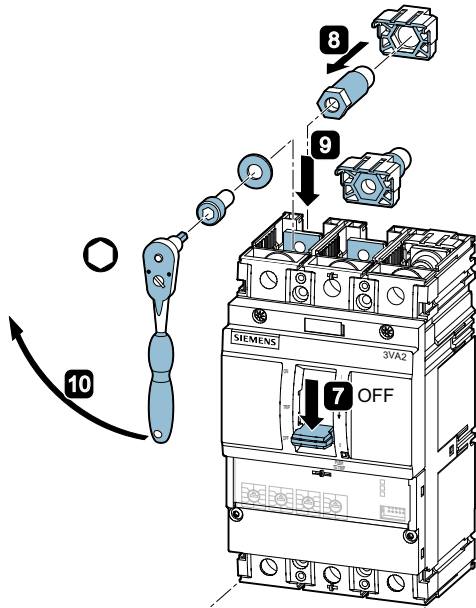


2 x

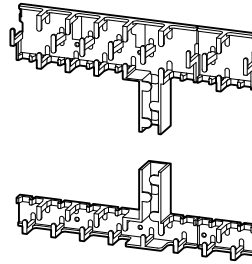


				$\frac{v}{Nm}$		mm		$\frac{v}{Nm}$				$\frac{v}{Nm}$	
3VA1	100 / 160	3P: 6 x 4P: 4 x	M4 x 70 mm	3P: 4 x 4P: 4 x	1.0 ... 1.4	3P: 6 x 4P: 8 x	M6 x 12 mm	5	10 ... 12	—		—	
	250		M4 x 80 mm				M8 x 20 mm	6		4x	BZ 3.0 x 16 mm	0.6 ... 0.7	
3VA2	100 / 160 250	3P: 4 x 4P: 4 x	M5 x 95 mm	1.8 ... 2.2		M8 x 20 mm	6	20 ... 22	4x	BZ 4.0 x 16 mm			0.6 ... 0.8
	400 / 630		M10 x 25 mm			8	4x						

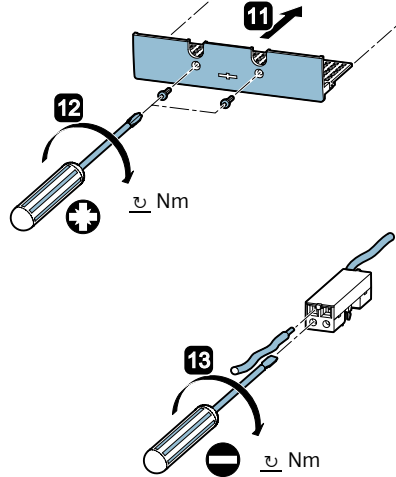
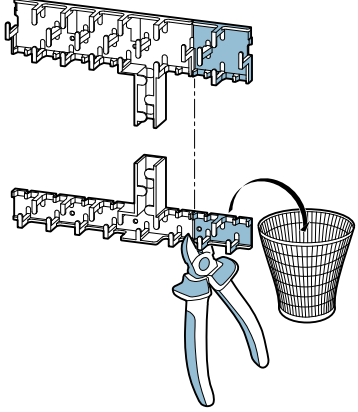


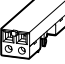

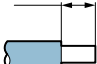
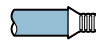
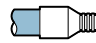




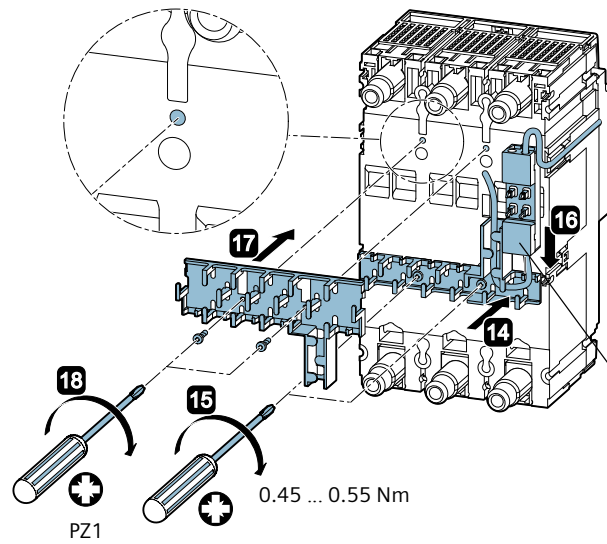
4P



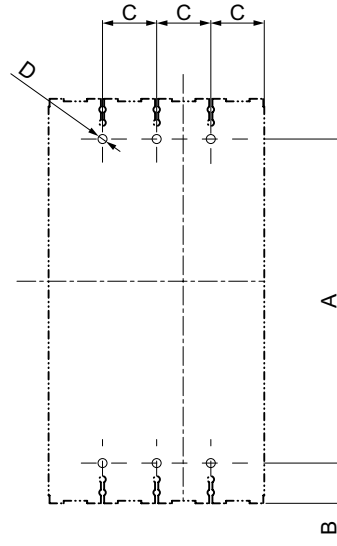
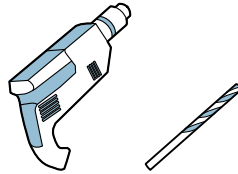
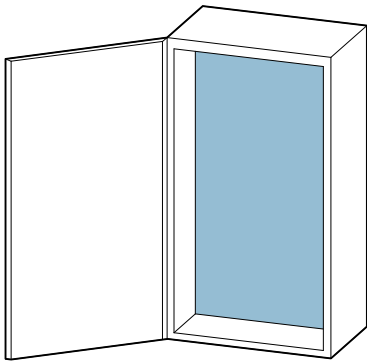
3P



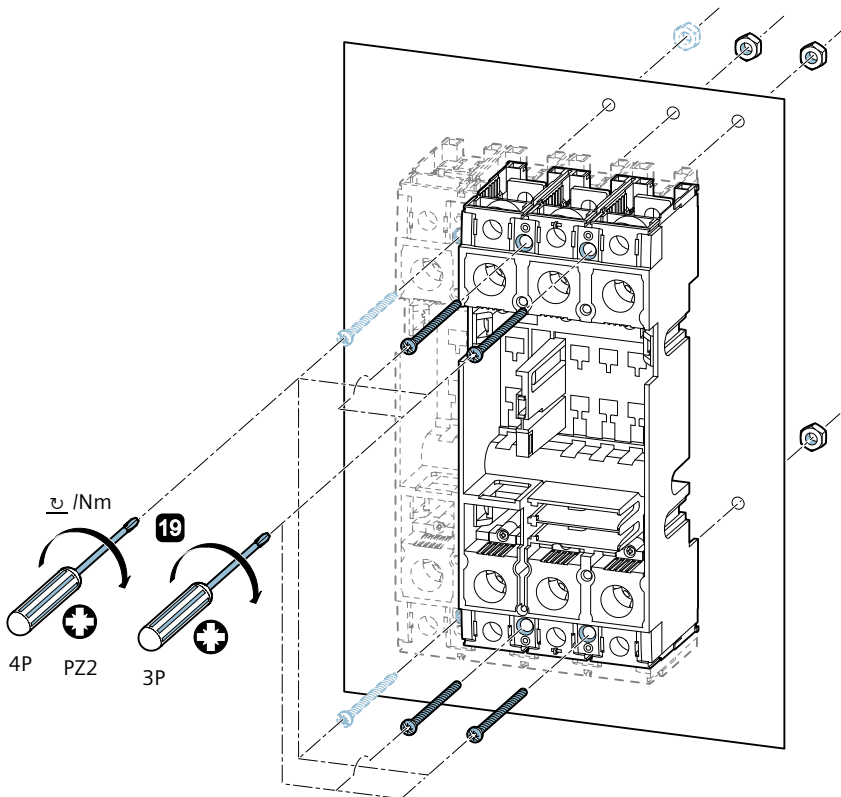
		 mm ²	 /Nm	 mm
		1 x (0.5 ... 1.5)	0.4 ... 0.5	10
		1 x (0.5 ... 1.0)		
		1 x (1.5 ... 2.5)		

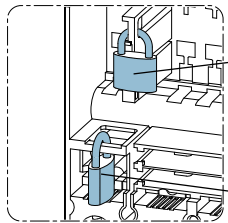



3VA9987 - 0KP80




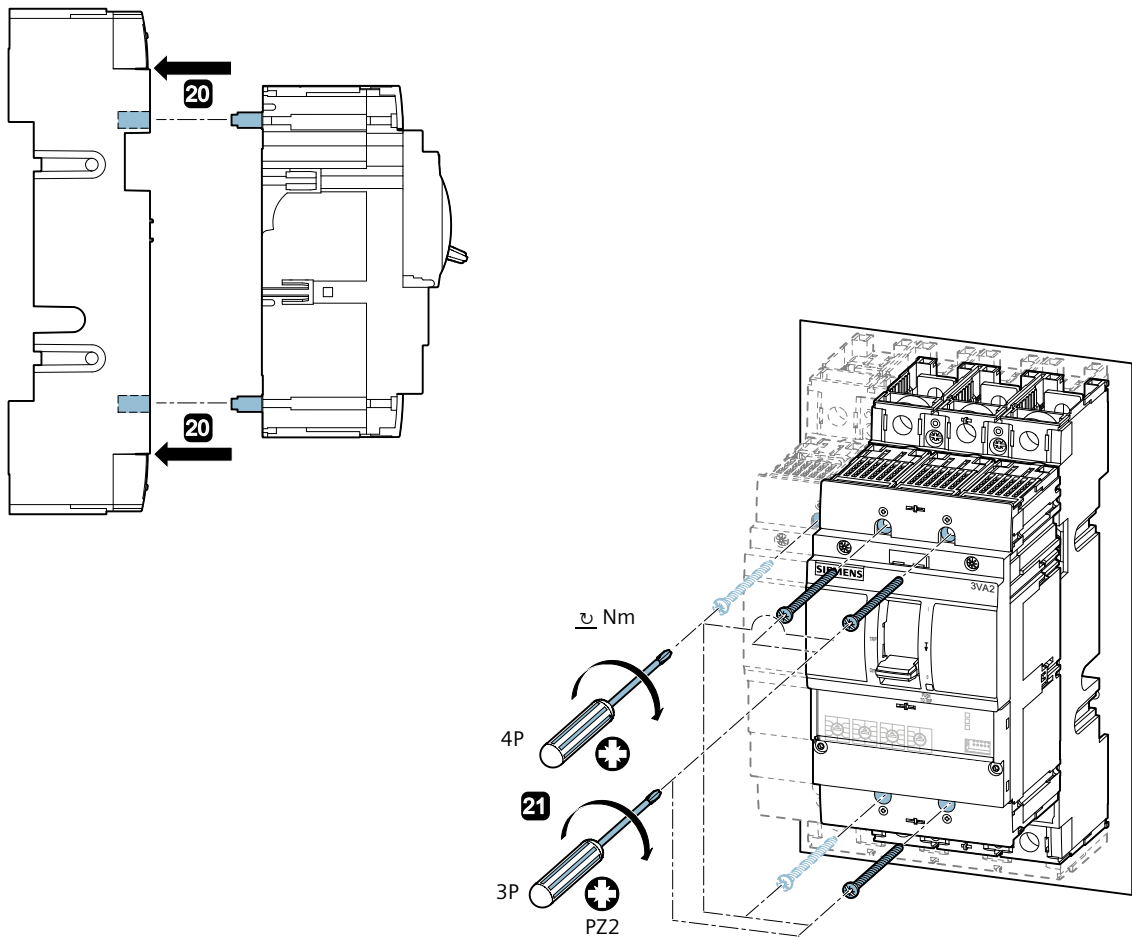
	3VA1		3VA2	
	100 / 160	250	100 / 160 / 250	400 / 630
A	160.5 mm	185.5 mm	209 mm	259 mm
B	13 mm	25.8 mm	26 mm	34 mm
C	25.4 mm	35 mm	35 mm	46 mm
D	Ø 4.5 mm		Ø 5.5 mm	



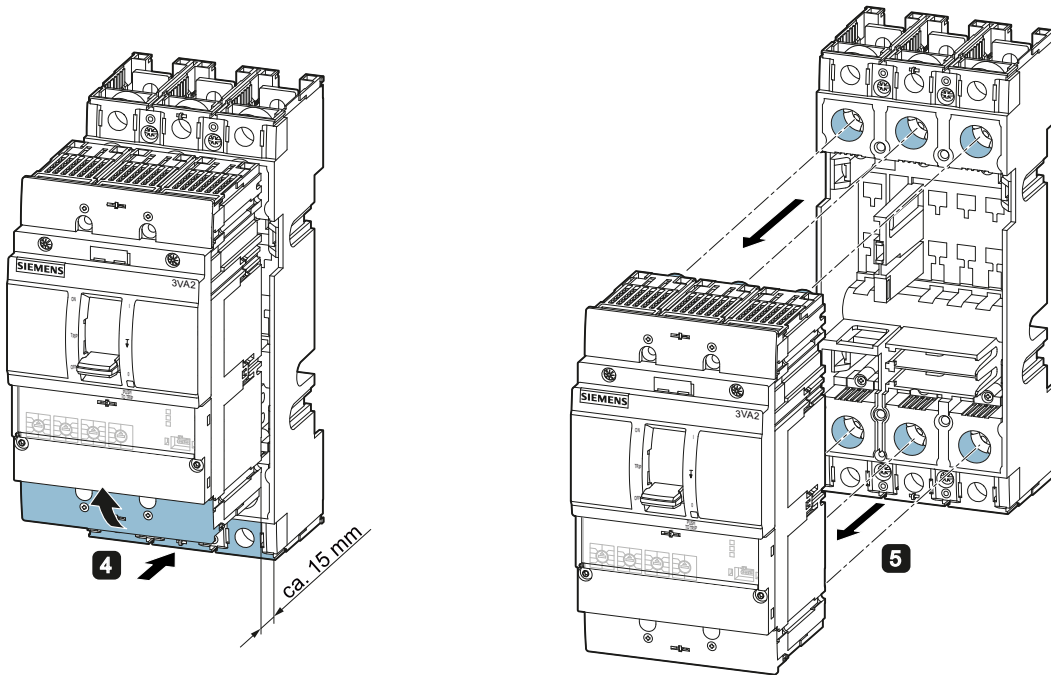
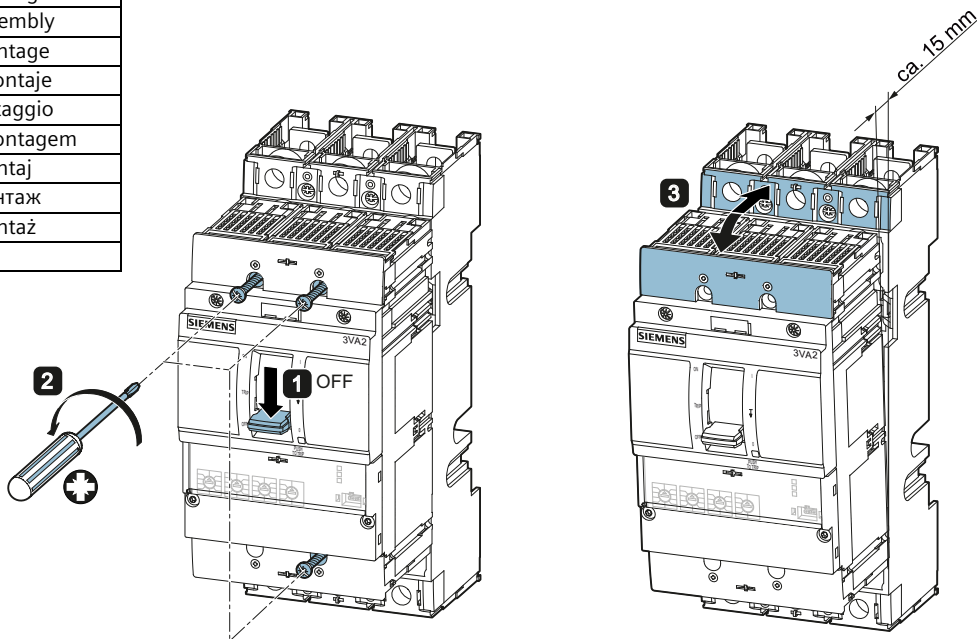
	\emptyset
1 ... 2	4 ... 8 mm

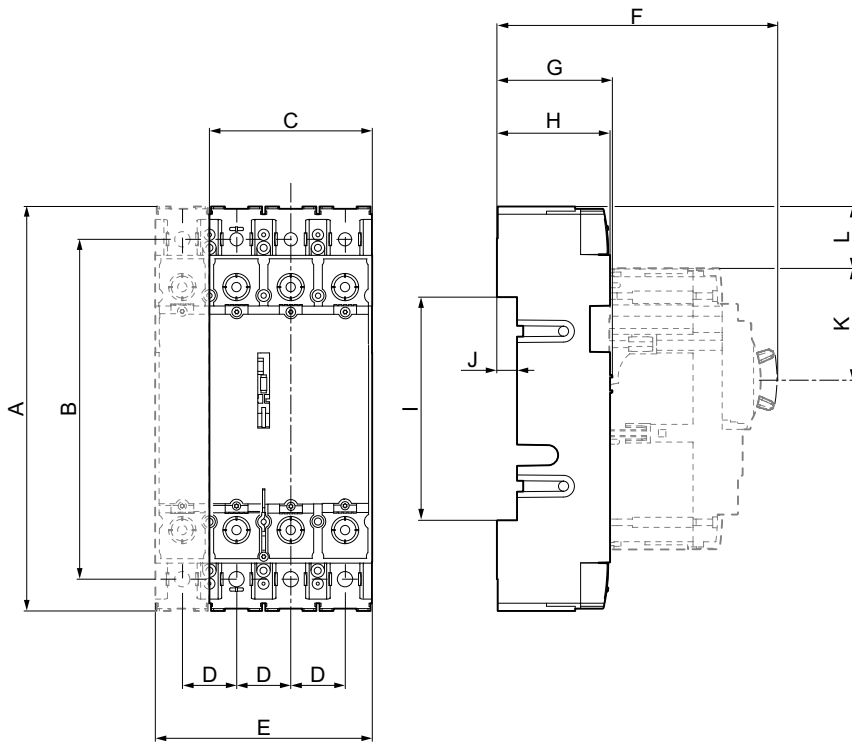
			\emptyset
3VA1	100 / 160	1 ... 2	4 ... 8 mm
	250		
3VA2	100 / 160 / 250	1 ... 3	
	400 / 630		





DE	Demontage
EN	Disassembly
FR	Démontage
ES	Desmontaje
IT	Smontaggio
PT	Desmontagem
TR	Demontaj
PY	Демонтаж
PL	Demontaż
中文	拆卸





	3VA1		3VA2	
	100 / 160	250	100 / 160 / 250	400 / 630
A	186.1 mm	237 mm	261 mm	327 mm
B	153.8 mm	196 mm	220 mm	259 mm
C	76.2 mm	105 mm	105 mm	138 mm
D	25.4 mm	35 mm		46 mm
E	101.6 mm	140 mm		184 mm
F	153 mm	155.4 mm	180 mm	232 mm
G	66.5 mm		74.5 mm	95.5 mm
H	65 mm		73 mm	94 mm
I	122.3 mm	149.5 mm	144 mm	192 mm
J	5 mm		13 mm	34 mm
K	60 mm	79 mm	70 mm	98 mm
L	28 mm	39.5 mm	40 mm	39.5 mm