

Rückseitige Verriegelung

Rear interlock

Verrouillage arrière

Enclavamiento trasero

Bloccaggio posteriore

Bloqueio traseiro

Arka taraftaki kilitleme

Запирающее устройство на задней стенке

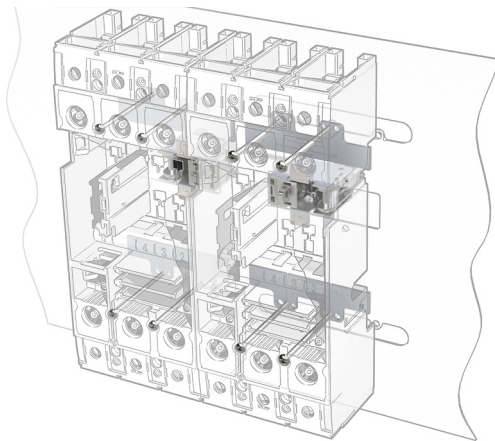
Blokada tylna

背面锁闭装置

3VA9088 - 0VM30



IEC 60947



Betriebsanleitung

Operating Instructions

Instructions de service

Istruttivo

Istruzioni operative

Instruções de Serviço

İşletme kılavuzu

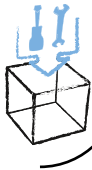
Руководство по эксплуатации

Instrukcja obsługi

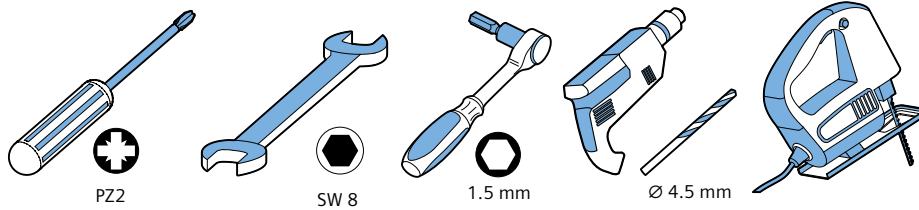
使用说明

DE	GEFAHR	Gefährliche Spannung. Lebensgefahr oder schwere Verletzungsgefahr. Vor Beginn der Arbeiten Anlage und Gerät spannungsfrei schalten.
EN	DANGER	Hazardous voltage. Will cause death or serious injury. Turn off and lock out all power supplying this device before working on this device.
FR	DANGER	Tension électrique. Danger de mort ou risque de blessures graves. Mettre hors tension avant d'intervenir sur l'appareil.
ES	PELIGRO	Tensión peligrosa. Puede causar la muerte o lesiones graves. Desconectar la alimentación eléctrica antes de trabajar en el equipo.
IT	PERICOLO	Tensione pericolosa. Può provocare morte o lesioni gravi. Scollegare l'alimentazione prima di eseguire interventi sull'apparecchiatura.
PT	PERIGO	Tensão perigosa. Perigo de morte ou ferimentos graves. Desligue a alimentação elétrica e proteja contra o religamento, antes de iniciar o trabalho no equipamento.
TR	TEHLİKE	Tehlikeli gerilim. Ölüm tehlikesi veya ağır yaralanma tehlikesi. Çalışmalara başlamadan önce, sistemin ve cihazın gerilim beslemesini kapatınız.
PY	OPASCHO	Opasne naprjajenie. Opasnost' dlya zhizni ili vozmozhnost' tyazhelykh travm. Pered nachalom rabot otklyuchit' podachu pitaniya k ustanovke i k ustroystvu.
PL	ZAGROŻENIE	Niebezpieczne napięcie. Niebezpieczeństwo poważnych obrażeń lub utraty życia. Przed rozpoczęciem prac wyłączyć zasilanie instalacji i urządzenia energią elektryczną.
中文	危险	危险电压。可能导致生命危险或重伤危险。 操作设备时必须确保切断电源。

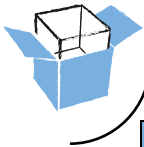
Technical Support:	Internet: http://www.siemens.com/lowvoltage/technical-support
--------------------	---



Notwendige Werkzeuge / Necessary tools / Outils nécessaires / Herramientas requeridas / 必要工具

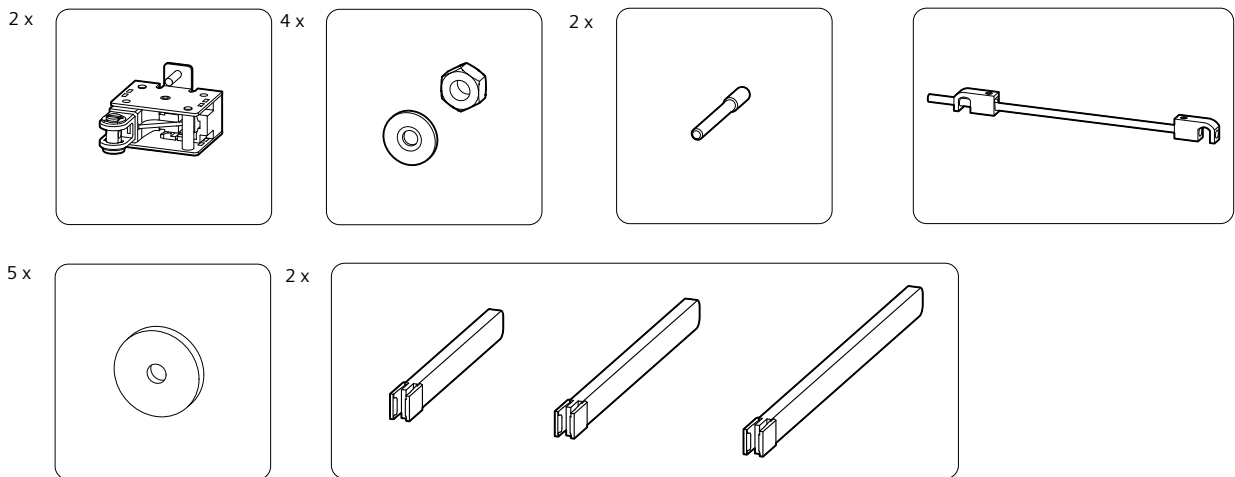


cal. ISO 6789

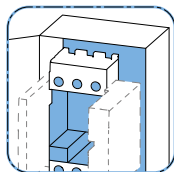


Lieferumfang / Scope of Delivery / Etendue de la livraison / Alcance de suministro / 供货范围

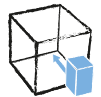
3VA9088 - 0VM30



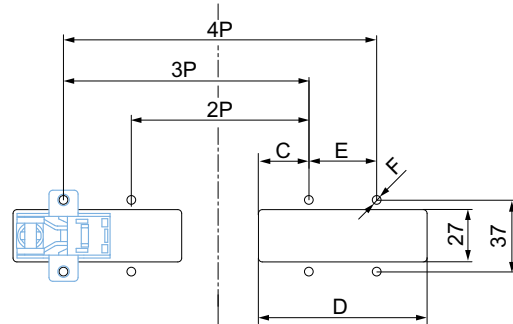
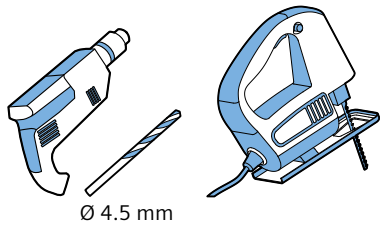
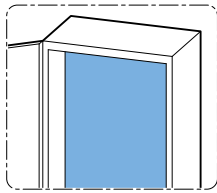
Information / Information / Informations / Información / 信息



DE	Rückseitige Verriegelung auf Schaltschrankrückwand mit Steck und Einschubtechnik
EN	Interlock at back on rear wall of control cabinet, plug-in and withdrawable versions
FR	Verrouillage sur le panneau arrière de l'armoire en technique enfichable et débrochable
ES	Enclavamiento posterior en pared de fondo del cuadro/tablero con montaje enchufado y extraíble
IT	Interblocco sul pannello posteriore del quadro elettrico con tecnica ad innesto ed estraibile
PT	Travamento do lado de trás na parede traseira do armário de distribuição com conector e técnica de inserção
TR	Şalt dolabı arka panosundaki geçme ve modül teknikli arka kilit
PY	Фиксация к задней стене распределительного шкафа с вставными и выдвигаемыми блоками с обратной стороны
PL	Blokada tylna na tylnej ścianie szafy sterowniczej z elementami wtykowymi i wsuwanymi
中文	开关柜后壁的背面联锁装置，采用插接技术

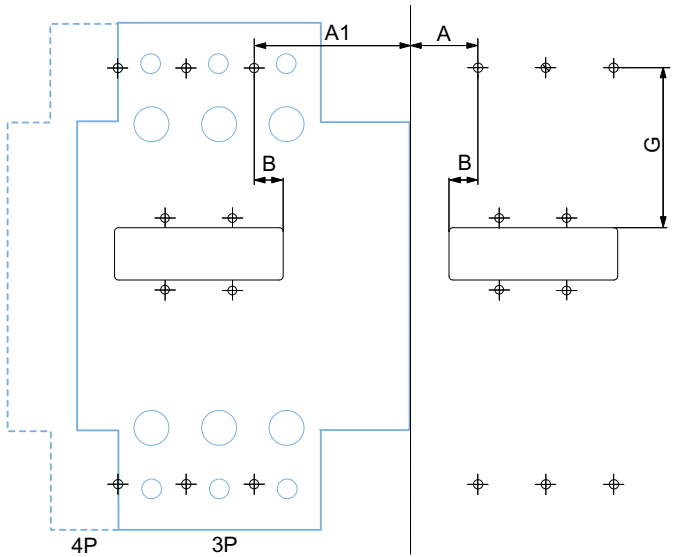
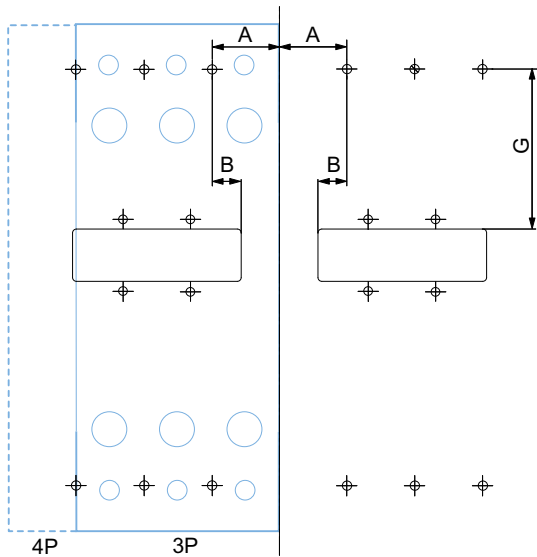


3VA9088 - OVM30

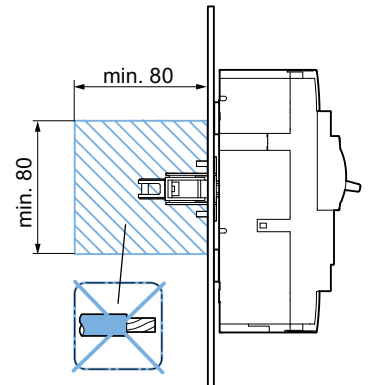


3VA9... - 0KP00

3VA9... - 0KD00



	3VA1		3VA2		
	100 / 160	250	100 / 160 / 250	400 / 630	
A_{min}	25.4 mm	34.8 mm	45.8 mm		Plug IN 3VA9... - 0KP00
A_{min}	46.4 mm	55.8 mm	66.8 mm		Draw OUT 3VA9... - 0KD00
A1_{min}	71.4 mm	80.8 mm	91.8 mm		
A_{max}	98 mm	99.8 mm	97.8 mm		Plug IN 3VA9... - 0KP00
A_{max}	77 mm	78.8 mm	76.8 mm		Draw OUT 3VA9... - 0KD00
A1_{max}	52 mm	53.8 mm	51.8 mm		
B	15 mm	14 mm	15 mm		
C	26 mm	25.4 mm	26 mm		
D	98 mm				
E	25.4 mm	35 mm	46 mm		
F	Ø 4.5 mm				
G	60.3 mm	68.3 mm	75 mm	96.9 mm	





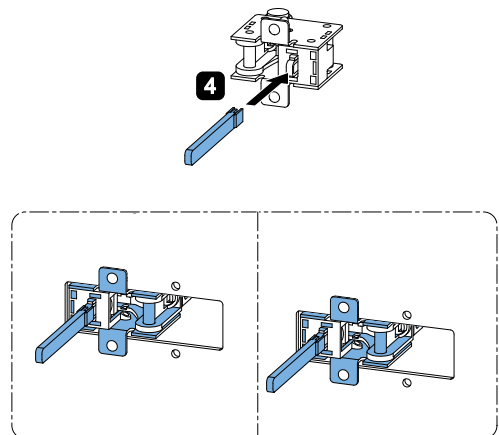
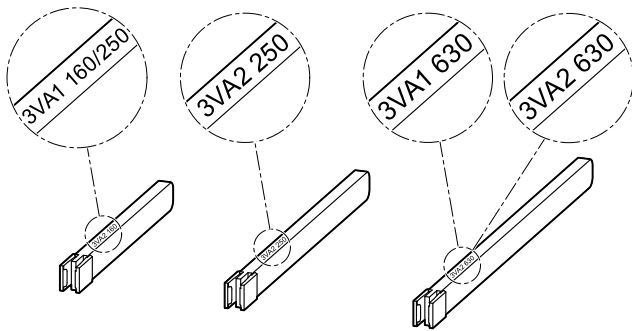
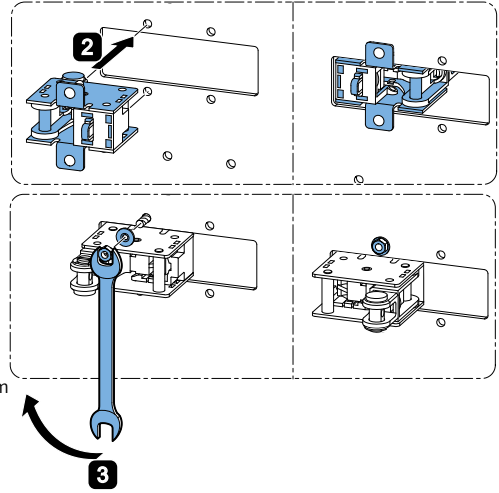
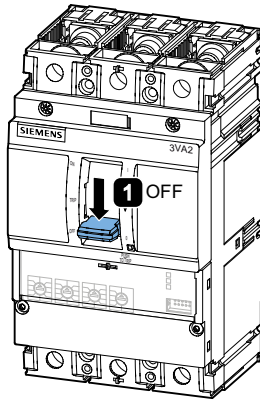
Information / Information / Informations / Información / 信息

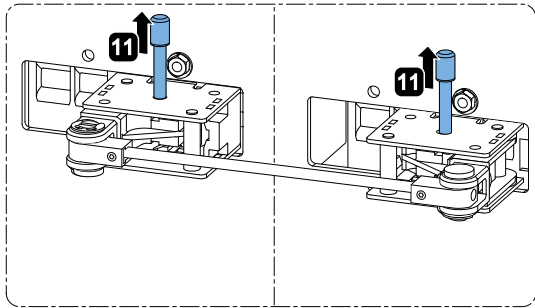
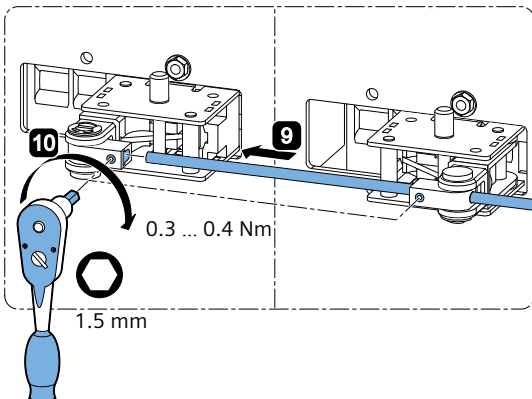
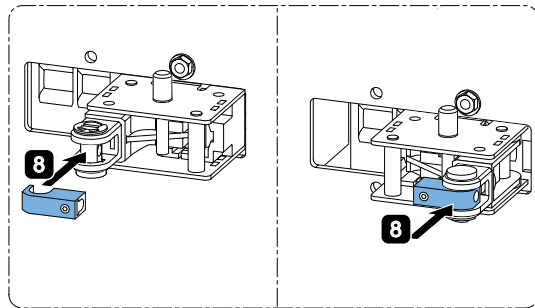
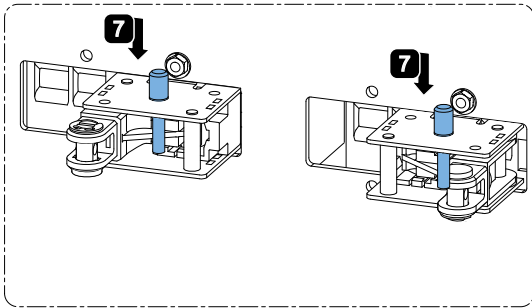
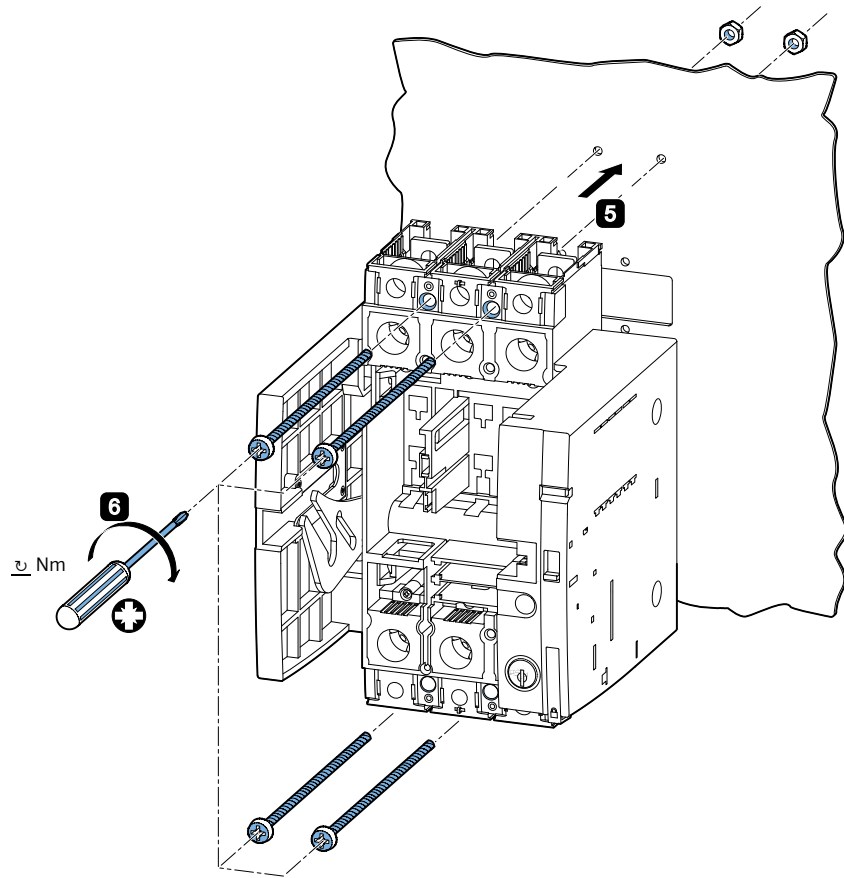
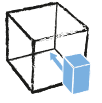


		MCCB #2			
		3VA1 100 / 160 2P / 3P / 4P	3VA1 250 3P / 4P	3VA2 100 / 160 / 250 3P / 4P	3VA2 400 / 630 3P / 4P
MCCB #1	3VA1 100 / 160 2P / 3P / 4P	OK	OK	OK	OK
	3VA1 250 3P / 4P	OK	OK	OK	OK
	3VA2 100 / 160 / 250 3P / 4P	OK	OK	OK	OK
	3VA2 400 / 630 3P / 4P	OK	OK	OK	OK



Montage extern / Assembly external / Montage rapporté / Montaje externo / 外部安装







	MCCB #1	MCCB #2	
1	OFF	OFF	OK
2	OFF	OFF → ON (5x)	OK
3	OFF → ON (5x)	OFF	OK
4	ON	OFF → ON (5x)	OK → 7
5	OFF → ON (5x)	ON	OK → 7

