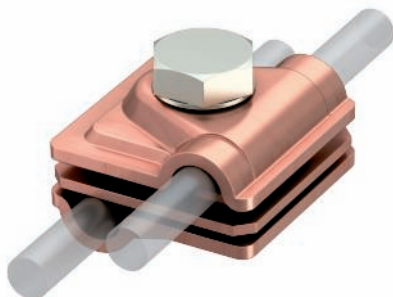


Vario quick connector Rd 6-8 / Rd 6-8 mm



- For T, intersection and parallel connections with adapter plates
- Quick mounting using an M10 x 30 bolt, made from rustproof stainless steel
- With sprung washer to DIN 137
- Corresponds to the requirements of VDE 0185-305 (IEC 62305)

Type	Fit mm	Dimen- sion A mm	Pack. pcs	Weight kg/100 pcs.	Item No.
249 6-8 CU	RD 6-8 / 6-8	40	10	12,710	5311 40 7

Cu Copper

Cu Copper-plated

Dimensions

