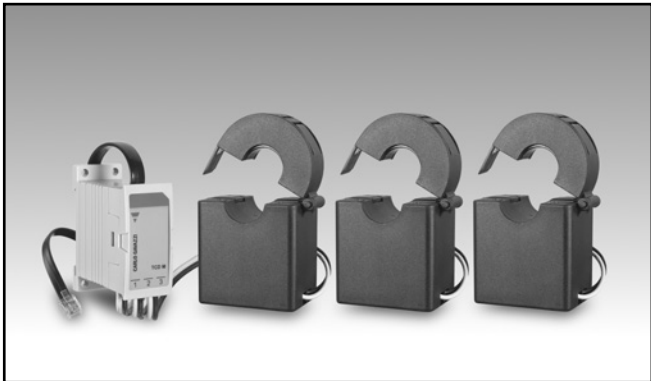


Energy Management

3-phase current transformers

Type TCD3M

CARLO GAVAZZI



- 3-phase current transformer set compatible to EM271 energy meter
- Primary current 400 A
- Hole size 20.5 mm
- Auto-detection of the primary current rated value by the EM271 energy meter
- For cable mounting
- Umbilical connection to EM271 energy meter through RJ11

Product description

Group of three split-core miniature current sensors to be used in combination with EM271 energy meter. Equipped with an RJ11 wire for a very fast installation. The energy meter automatically reads from TCD3M its

primary current rated value, saving time for the user set-up. It can be mounted directly on the cables whose current is to be monitored, without need to interrupt the load power supply.

How to order

TCD3M 400 80CM X

Model _____

Primary current _____

Cable lenght _____

Option _____

Type Selection

Primary current	Cable length (RJ11 side)	Option
400: 400A primary current input	80 CM: 80cm	X: none

Specification

Electrical specifications

Rated Primary Current
45/65Hz
DC resistance at 20°C
Accuracy
Linearity
Phase error at rated
current range @RL =50 Ω
Operating temperature range

Storage temperature range

Dielectric withstand voltage
(Hi-pot)
Insulation Resistance
Max primary cable system
voltage

400A (20-480A max)
130 Ω max
1%
0.5%

≤2°
-40°C to +85°C (-40°F
to185°F) (R.H. < 90% non-
condensing @ 40°C)
-45°C to +90°C (-49°F
to194°F) (R.H. < 90% non-
condensing @ 40°C)

3500V/1mA/1min
DC500V/100MΩ min

660V

Mechanical specification

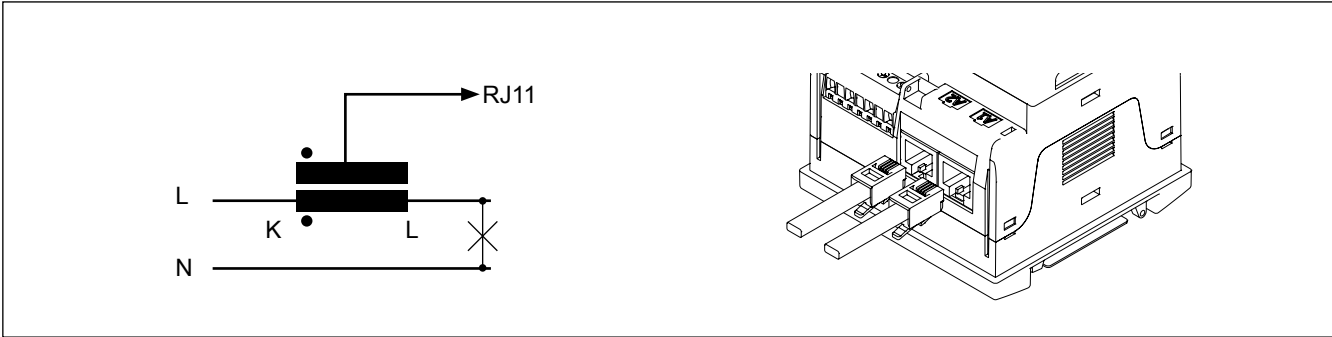
Current transformer terminal

Current transformer housing
Opening Angle
Approx weight
Approvals
Mounting
Connections
Protection Degree
Hole Size

200cm (UL1015 22AWG
PVC wire, 0.32mm²)
PP3307
180 degree
500g
CE
Cable Mounting
RJ11
IP20
Max 20.5mm



Wiring diagrams



Dimensions

