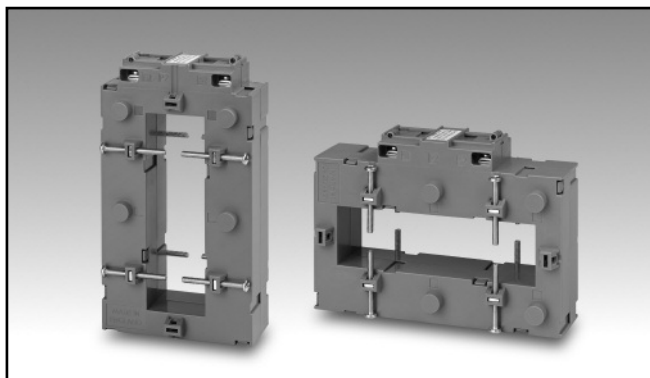


Accessories

AC Solid-core Current Transformer

Type CTD-11V/11H (max 35x125 mm)

CARLO GAVAZZI



- Bus-bar type solid-core current transformer
- Accuracy class 0.5
- Current range from 1000 to 4000A
- Up to 8 bus-bar fixing screws
- Double screw terminals (up to 4-wire connections)
- Sealable terminal block covers

Product Description

Solid-core current transformer with bus-bar mounting facility.

Rated primary current from 1000 to 4000A.

Ordering Key CTD-11V 4000 5A XXX

Model _____
 Primary current _____
 Secondary current _____
 Option _____

Type Selection

| Model | Primary current | Secondary current | Option |
|------------------------------|-----------------|-------------------|-----------|
| CTD-11V: vertical mounting | 1000 | 5A | XXX: none |
| CTD-11H: horizontal mounting | 1500 | | |
| | 2000 | | |
| | 2500 | | |
| | 3000 | | |
| | 4000 | | |

Input Specifications

| | |
|--|---|
| Operating frequency | 50-60 Hz |
| Max. system voltage | 0.72 kV |
| Rated insulation level | 3 kV/1 min. @ 50 Hz |
| Insulation class | B |
| Short-time current rating I_{th} I_{dyn} | Typical 100 I_n /1 s 2.5 I_{th} The short-time thermal current I_{th} is anyway limited by the cable/bus-bar size |
| Security factor (FS) | ≤ 10 |

| | |
|--|--|
| Working temperature | -30°C to +40°C (-22°F to 104°F) (R.H. < 90% non condensing @ 40°C) |
| Storage temperature | -30°C to +70°C (-22°F to 158°F) (R.H. < 90% non condensing @ 40°C) |
| Approvals | CE |
| Connection Cable cross section area | Screw type From 1.5 to 4 mm ² |
| Protection degree | IP20 |
| Bus-bar size | Max. 35x125 mm |
| Weight | < 1.2 Kg |

General Specifications

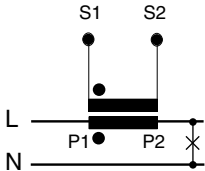
| | |
|----------------------|---|
| Standards | According to EN60044-1 |
| Housing | Polycarbonate UL94 V2 |
| Mounting | Bus-bar mounting |
| Standard accessories | Two terminal block screws. Eight bus-bar fixing screws. Two sealable terminal block covers. |

Output Specifications

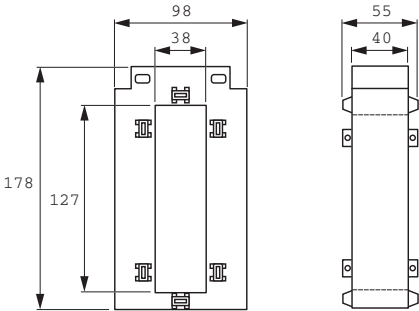
| | |
|-------------------------|-------|
| Rated secondary current | 5 A |
| Burden | 15 VA |



Wiring Diagram



Dimensions Vertical mounting (mm)



Dimensions Horizontal mounting (mm)

