

Energy Management

Split core current sensors

Type CTV3X

CARLO GAVAZZI



- Split core current sensor for retrofit applications
- Accuracy class 1%
- 0.333V standard secondary output

Product description

Split core current sensor with compact dimensions, suitable for retrofit applications when used in combination with EM21-72V energy meter.

How to order CTV3X 200A 333MV

Model _____
Primary current _____
Secondary output _____

Type Selection

Primary current

200A: 200A primary current input

Secondary output

333MV: 333mV secondary output voltage

Specification

Electrical specifications

Rated Primary Current	2-200A
50/60Hz	200A/333mV
Current ratio	Np:Ns=1:3000
Turns Ratio	160Ω Max
DC resistance at 20°C	1%
Accuracy	0.5%
Linearity	≤2°
Phase error at rated current range	from -40 to 85°C
Operating temperature range	from -45 to 90°C
Storage temperature range	3500V/1mA/1min
Dielectric withstand voltage (Hi-pot)	DC500V/100MΩ min
Insulation Resistance	660V
Max primary cable system voltage	

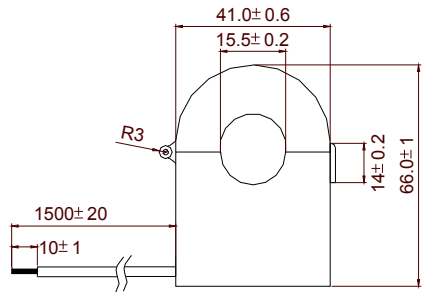
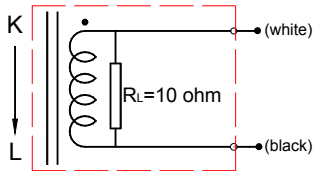
Mechanical specification

Housing material	PP3307
Opening Angle	180 degree
Output terminal	UL1015 22AWG (0.32mm ²)
	PVC wire
Approx weight	118g
Approvals	CE, cURus

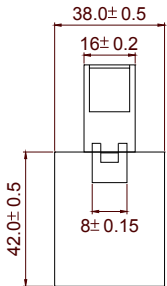


Wiring diagram

Dimensions



Front view



Right view

