

Energy Management

Split core current sensors

Type CTV8X



- Split core current sensor for retrofit applications
- Accuracy class 1%
- 0.333V standard secondary output

Product description

Split core current sensor, suitable for retrofit applications when used in combination with EM21-72V energy meter.

How to order CTV8X 800A 333MV

Model _____
Primary current _____
Secondary output _____

Type Selection

Primary current

800A: 800A primary current input

Secondary output

333MV: 333mV secondary output voltage

Specification

Electrical specifications

Rated Primary Current
50/60Hz
Current ration
Accuracy
Operating temperature range
Storage temperature range
Dielectric withstand voltage (Hi-pot)
Insulation Resistance
Max primary cable system voltage

800A (1-1000Amax)
800A/333mV
1%
from -40 to 85°C
from -45 to 90°C

2500V/1mA/1min
DC500V/100MΩ min

660V

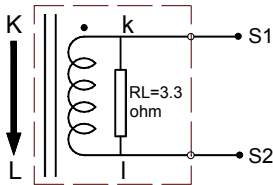
Mechanical specification

Housing material
Opening Angle
Output terminal
Approx weight
Approvals

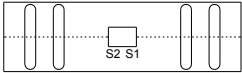
PTB357TF
180 degree
WJ2EDGK-7.62-02P
725g
CE, cURus



Wiring diagram



Dimensions



Top View

