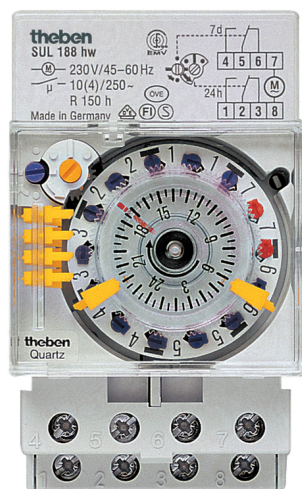


SUL 188 hw

Article number: 1880108

Description

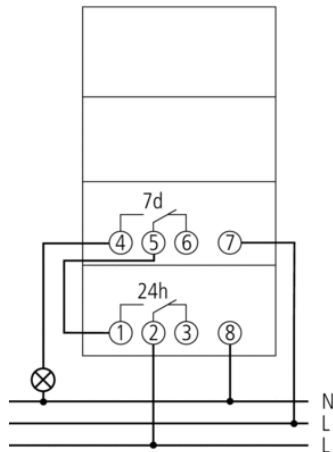


- Analogue time switch
- Daily/weekly program and 1/2 day OFF function for the weekdays
- 1 channel (with series connection of the 2 contacts)
- Tappets and turning segments
- Shortest switching time: 45 minutes (12 hours for the 1/2 day OFF function)
- 6 tappets included in delivery
- With power reserve (NiMH rechargeable battery)
- Quartz controlled
- Tappets
- Screw terminals
- Switching status display
- Operating indication

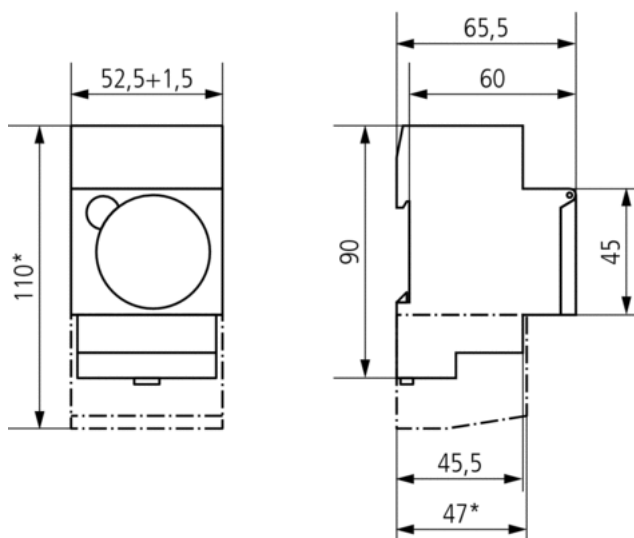
Technical data

Operating voltage	230 V AC
Frequency	45 – 60 Hz
Number of channels	1
Program	Daily/weekly program with 1/2 day OFF function
Width	3 modules
Installation type	DIN rail
Type of connection	Screw terminals
Drive	Quartz-controlled stepper motor
Program	Daily/weekly program with 1/2 day OFF function
Power reserve	3 days
Switching capacity at 250 V AC, $\cos \varphi = 1$	10 A
Switching capacity at 250 V AC, $\cos \varphi = 0,6$	4 A
Shortest switching times	45 min, 12 h
Programmable every	15 min, 12 h
Time accuracy at 25 °C	$\leq \pm 1$ s/day (quartz)
Type of contact	Changeover contact
Switching output	Potential-free and phase-independent
Stand-by consumption	0,5 W
Test approval	VDE
Housing and insulation material	High-temperature resistant, self-extinguishing thermoplastic
Type of protection	IP 20
Protection class	II according to EN 60 730-1
Ambient temperature	-20 °C ... +55 °C

Connection example



Scale drawings



Accessories

Front panel kit

- Article number: 9070001
[Details ▶ www.theben.de](http://www.theben.de)



Terminal cover 52,5 mm

- Article number: 9070061
[Details ▶ www.theben.de](http://www.theben.de)

