

SUL 189 hw

Article number: 1890108

## Description

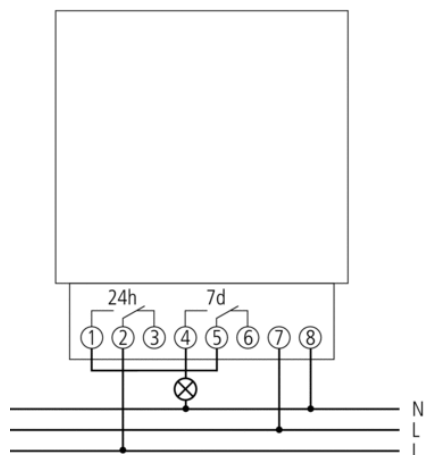


- Analogue time switch
- Daily/weekly program and 1/2 day OFF function for the weekdays
- 1 channel (with series connection of 2 the contacts)
- With power reserve (NiMH rechargeable battery)
- Quartz controlled
- Tappets and turning segments
- Shortest switching time: 30 minutes (12 hours for the 1/2 day OFF function)
- Switching status display
- 6 tappets included in delivery

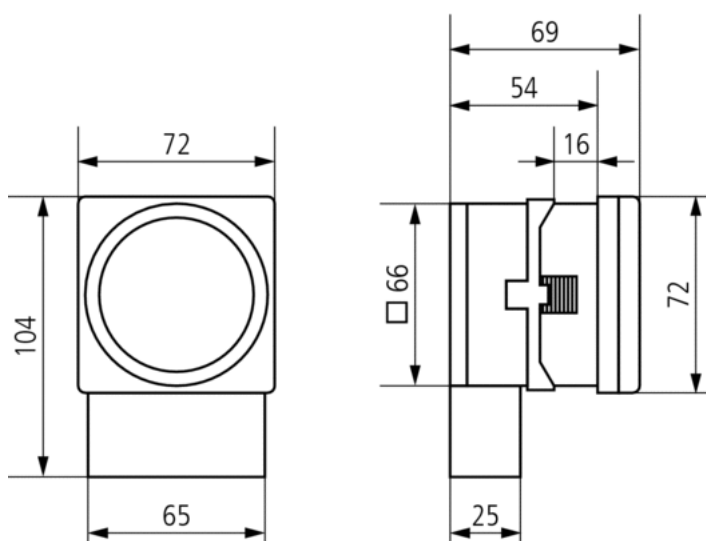
## Technical data

Operating voltage	230 V AC
Frequency	50 – 60 Hz
Number of channels	1
Installation type	Front panel installation/wall installation
Type of connection	Screw terminals
Program	Daily/weekly program with 1/2 day OFF function
Power reserve	3 days full power reserve approx. 3 days after connection to operating voltage
Switching capacity at 250 V AC, $\cos \varphi = 1$	10 A
Switching capacity at 250 V AC, $\cos \varphi = 0,6$	2 A
Shortest switching times	30 min, 12 h
Programmable every	15 min, 12 h
Time accuracy at 25 °C	$\leq \pm 1$ s/day (quartz)
Type of contact	Changeover contact
Switching output	Potential-free and phase-independent
Stand-by consumption	0,5 W
Test approval	EMV
Housing and insulation material	High-temperature resistant, self-extinguishing thermoplastic
Type of protection	IP 20
Protection class	II according to EN 60 730-1
Ambient temperature	-10 °C ... +55 °C

## Connection example



## Scale drawings



## Accessories

### Snap-on mounting 72 x 72

- Article number: 9070071  
[Details ► www.theben.de](http://www.theben.de)

