

## RadioLINK Module

### Plug-in module for Ei208W & Ei208DW CO Alarms

Ei208WRF and Ei208DWRF CO Alarms are supplied with the module

- Interconnect two or more Ei208 series alarms.
- No wiring required.
- One alarm sounds, all sound.
- Raises alarm sound levels throughout the dwelling.
- Loud distinct alarm sound, 85 dB(A) minimum at 3m) from each alarm.
- 5 Year guarantee (limited).



### Product Description

The Ei200MRF is an optional add-on RadioLINK module designed to work with the Ei208W and Ei208DW Carbon Monoxide alarms.

The module simply plugs into the back of the Ei208W and Ei208DW allowing wireless interconnection CO alarms and accessories. When one alarm sounds, all sound.

The module takes its power from the CO alarm.

All alarms fitted with the module and compatible accessories can be coded together so as to avoid interference from other systems. This process is known as house coding.

When coded with an Ei412 remote control switch the alarms can be remotely tested, located<sup>1</sup> and silenced.

If an Ei170RF deaf alarm panel is fitted in the system a CO alarm signal will flash the strobe light and activate the vibration pad.

If an Ei428 relay output module is fitted in the system it can be used to switch an external control or indicator device, e.g. the Ei428 could possibly be used to cut off power or fuel to the appliance.

The module also acts as a repeater, ensuring very strong and robust transmit and receive signal paths.

Note 1: The locate function will silence all alarms in the system except the one detecting the CO.

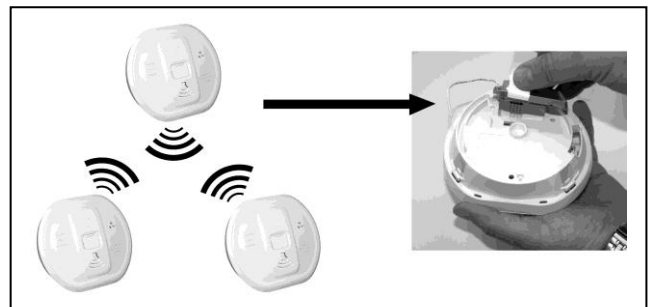
Shannon Free Zone, Shannon, Co. Clare, Ireland.

Ph.+353 61 4712777   Fx.+353 61 471053

Email. [admin@eielectronics.ie](mailto:admin@eielectronics.ie)

Web: [www.eielectronics.com](http://www.eielectronics.com)

### Fitting the RF module



Fitting the RF module is simple.

- Twist off the alarm base
- Align the connector pins on the module with the socket on the CO alarm and push home.
- When all the alarms have been fitted proceed to house code the system

The module transmits the following signals.

- Carbon Monoxide alarm
- Low battery alarm
- Sensor fault alarm
- End of life signal

The module 'Works with' the following RadioLINK accessories.

- Ei 412 remote control switch
- Ei 408 switched input module
- Ei 428 relay output module

Made  
in Ireland



## Technical Specification

<b>Interconnect:</b>	Up to 12 RadioLINK Carbon Monoxide alarms and accessories	<b>Indicator Lights:</b> • <b>Blue RF light</b>	Indicates when an RF signal is being transmitted.
<b>Supply Voltage:</b>	Power is supplied by the lithium battery in the CO alarm	<b>Frequency</b>	868MHz
<b>Repeater:</b>	Each module on receiving an RF signal will retransmit it at full power. This repeat feature is supported up to 3 levels	<b>Fixing</b>	Screw fixing & free standing
<b>Temperature</b>	-10°C to 40°C	<b>Product Dimensions</b>	60 x 32 X 15 mm
<b>Relative Humidity</b>	15% to 95% non-condensing	<b>Package Dimensions</b>	122 x 135 x 50 mm
<b>Certification</b>	EN300 220:2007	<b>Weight Package</b>	40g

## Product Family

Model Number	Description
Ei207	Stand alone with replaceable AAA Batteries
Ei207D	Stand alone with replaceable AAA Batteries and LCD Display
Ei208W	Powered for Life sealed Lithium Battery and optional RadioLINK upgrade
Ei208DW	Powered for Life sealed Lithium Battery, LCD Display and optional RadioLINK upgrade
Ei208WRF	Powered for Life sealed Lithium Battery with RadioLINK module fitted
Ei208DWRF	Powered for Life sealed Lithium Battery with LCD display & RadioLINK module fitted.
Ei200MRF	RadioLINK upgrade module for Ei208W and Ei208DW