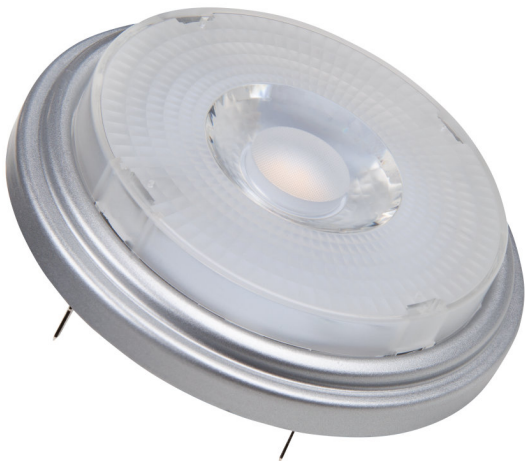


# PRODUCT DATASHEET

## SST AR111 50 24° 7.3 W/2700K G53 GLOWdim

PARATHOM PRO AR111 | Professional LED Lamps with added function



### AREAS OF APPLICATION

- Shops
- Shop windows
- Hotels, hospitality
- Museums, art galleries
- Exhibition rooms
- Residential interiors
- Luxurious living areas
- Outdoor applications only in suitable luminaires

### PRODUCT BENEFITS

- Provides an especially warm light when dimmed down
- Short payback period thanks to low energy consumption and maintenance costs
- Premium light quality thanks to high color rendering index and narrow binning
- Can be easily combined with other GLOWdim products in one application

### PRODUCT FEATURES

- Professional LED alternative to AR111 halogen lamps
- Good color rendering index  $R_a: \geq 90$
- Mercury-free lamps
- Dimming changes light color from warm white (2,700 K) to extra warm white (1,800 K)



## TECHNICAL DATA

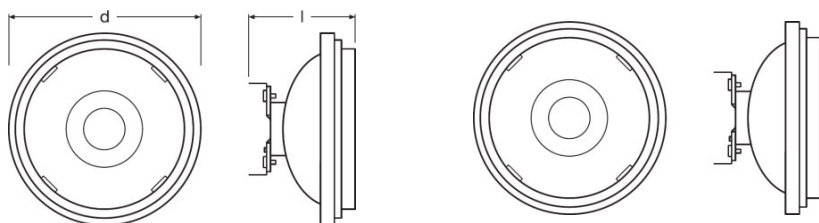
### Electrical data

Rated wattage	12.00 W
Nominal wattage	7.30 W
Nominal voltage	12 V
Claimed equiv. conventional lamp power	50 W
Max. lamp no. on circuit break. 10 A (B)	6
Max. lamp no. on circuit break. 16 A (B)	10
Operating frequency	50...60 Hz

### Photometrical data

Lumen main.fact.at end of nom.life time	0.70
Light color (designation)	Warm White
Color temperature	2700 K
Luminous flux	450 lm
Color rendering index Ra	≥90
Nominal luminous flux	450 lm
Rated color temperature	2700 K

### Dimensions & weight



Overall length	62.0 mm
----------------	---------

### Temperatures & operating conditions

Ambient temperature range	-20...+40 °C
Maximum temperature at tc test point	83 °C

### Lifespan

Nominal lamp life time	40000 h
Rated lamp life time	40000 h

Number of switching cycles	100000
----------------------------	--------

Additional product data

Base (standard designation)	G53
Mercury-free	Yes
Product remark	All technical parameters apply to the entire lamp/Due to the complex production process for light-emitting diodes, the typical values shown for the technical LED parameters are purely statistical values that do not necessarily match the actual technical parameters of each individual product, which can vary from the typical value

Capabilities

Dimmable	Yes
----------	-----

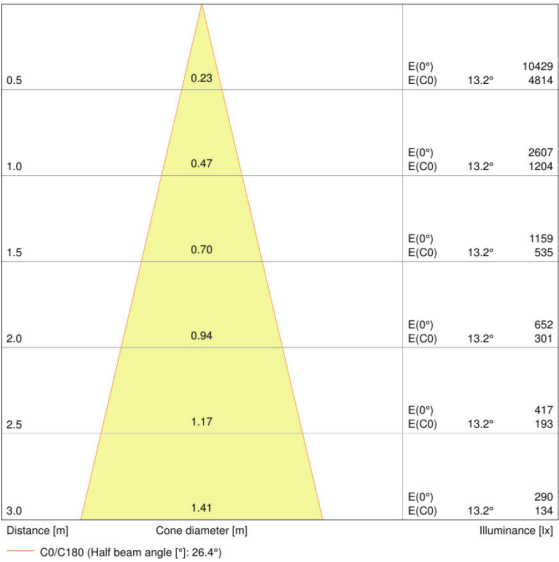
Certificates & standards

Energy efficiency class	A
-------------------------	---

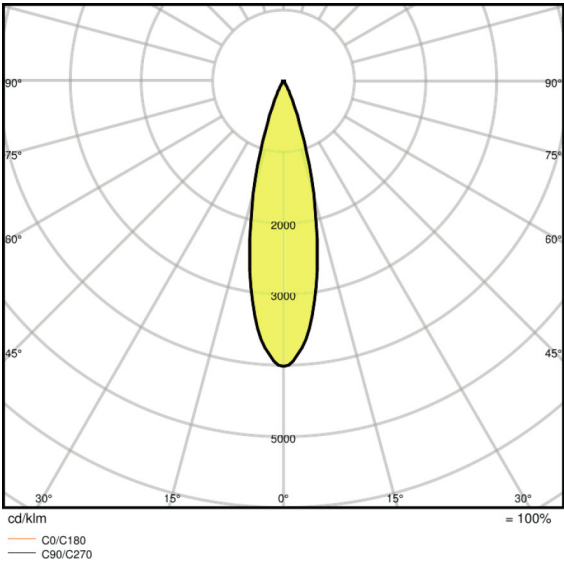
Country-specific categorizations

Order reference	LED111GD5024 12
-----------------	-----------------

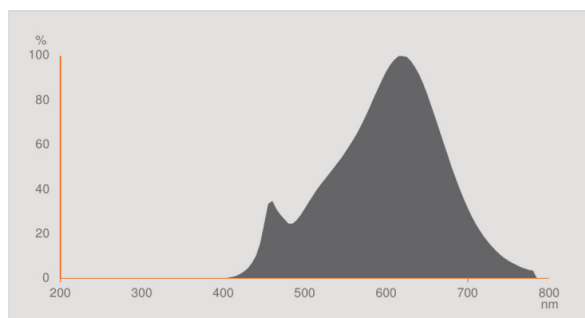
Light Distribution



LDC typ cone



LDC typ polar



Spectral power distribution

## LOGISTICAL DATA

Product code	Packaging unit (Pieces/Unit)	Dimensions (length x width x height)	Gross weight	Volume
4058075104891	Folding carton box 1	86 mm x 86 mm x 112 mm	246.00 g	0.83 dm <sup>3</sup>
4058075104907	Shipping carton box 6	275 mm x 185 mm x 130 mm	1569.00 g	6.61 dm <sup>3</sup>
4058075448964	Folding carton box 1	113 mm x 66 mm x 113 mm	246.00 g	0.84 dm <sup>3</sup>
4058075448971	Shipping carton box 6	238 mm x 208 mm x 123 mm	1263.00 g	6.09 dm <sup>3</sup>

The mentioned product code describes the smallest quantity unit which can be ordered. One shipping unit can contain one or more single products. When placing an order, for the quantity please enter single or multiples of a shipping unit.

## REFERENCES / LINKS

For dimming conformity see

▶ [www.ledvance.com/dim](http://www.ledvance.com/dim)

For further products and actual information concerning LED lamps see

▶ [www.ledvance.com/ledlamps](http://www.ledvance.com/ledlamps)

Further information see

▶ [www.ledvance.com/low-voltage-ledlamps](http://www.ledvance.com/low-voltage-ledlamps)

## DISCLAIMER

Subject to change without notice. Errors and omission excepted. Always make sure to use the most recent release.