

# PRODUCT DATASHEET

## PL PFM 600 UGR19 36W/4000K DALI

**PANEL PERFORMANCE 600 UGR<19 | Square recessed panel luminaires, tool-free installation and low glare, for 600 x 600 mm ceiling systems**



### AREAS OF APPLICATION

- Direct replacement for luminaires with fluorescent lamps
- Offices, conference rooms
- Reception areas, foyers, corridors, elevators
- Suitable for recessed ceiling systems with grid size of 600 x 600 mm

### PRODUCT BENEFITS

- Tool-free electrical connection due to push button connector
- Through-wiring possible with included connector box
- Energy savings thanks to high system efficacy: up to 120 lm/W
- Good glare reduction (UGR < 19)
- Extended services such as energy monitoring and remote maintenance possible with DALI versions
- Comfortable light and high color consistency
- External driver for extended flexibility and easy installation
- Low flicker light thanks to special electronic control gear
- Emergency lighting possible with LEDVANCE Emergency Conversion Box

### PRODUCT FEATURES

- Extruded aluminum frame
- Polystyrene diffuser
- 3-pole terminal block, cable cross section up to 3 x 2.5 mm<sup>2</sup> (25 W and 30 W versions)



- 5-pole terminal block, cable cross section up to 5 x 2.5 mm<sup>2</sup> (36 W versions)
- DALI versions with IoT-ready DALI-2 driver
- Lifetime (L80/B10): up to 60,000 h (at 25 °C)

## TECHNICAL DATA

### Electrical data

Nominal wattage	36.00 W
Operating mode	External LED driver
Nominal voltage	220...240 V
Mains frequency	0/50/60 Hz
Power factor $\lambda$	> 0.95
Max. no. of lum. on circuit break. B16 A	20
Max. no. of lum. on circuit break. C10 A	21
Max. no. of lum. on circuit break. C16 A	33
Inrush current	30 A
Total harmonic distortion	< 10 %
Inrush current time $T_{h50}$	200 $\mu$ s

### Luminaire control gear data

ECG - Life time	74 000 h
Low flicker	Yes
Output current	760 mA
ECG - Output ripple current	<3 %

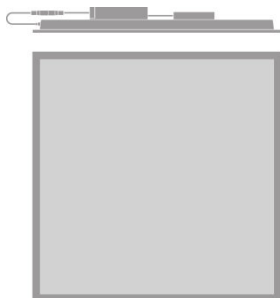
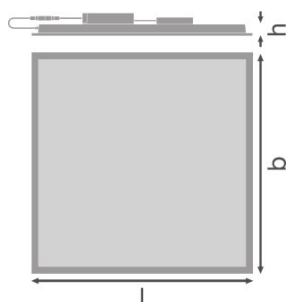
### Photometrical data

Color temperature	4000 K
Color rendering index Ra	>80
Light color (designation)	Cool White
Luminous flux	4320 lm
Luminous efficacy	120 lm/W
Standard deviation of color matching	3 sdcn

### Light technical data

Beam angle	90.00 °
UGR lateral	<19
UGR longitudinal	<19

## Dimensions &amp; weight



<b>Length</b>	595.0 mm
<b>Width</b>	595.0 mm
<b>Height</b>	32.0 mm
<b>Product weight</b>	2000.00 g
<b>Mounting width</b>	575.0 mm
<b>Mounting length</b>	575.0 mm

## Colors &amp; materials

<b>Product color</b>	White
<b>Housing color</b>	White
<b>Body material</b>	Aluminum
<b>Light emitting surface material</b>	Polystyrene

## Temperatures &amp; operating conditions

<b>Ambient temperature range</b>	-10...+50 °C
----------------------------------	--------------

## Lifespan

<b>Number of switching cycles</b>	50000
<b>Lifespan L70/B50 at 25 °C</b>	100000 h
<b>Lifespan L80/B10 at 25 °C</b>	60000 h
<b>Lifespan L90/B10 at 25 °C</b>	35000 h

## Additional product data

<b>Mounting type</b>	Recessed/Suspended/Surface
<b>Mounting location</b>	Ceiling / Wall
<b>Low flicker</b>	Yes
<b>Product remark</b>	Available from September 2020

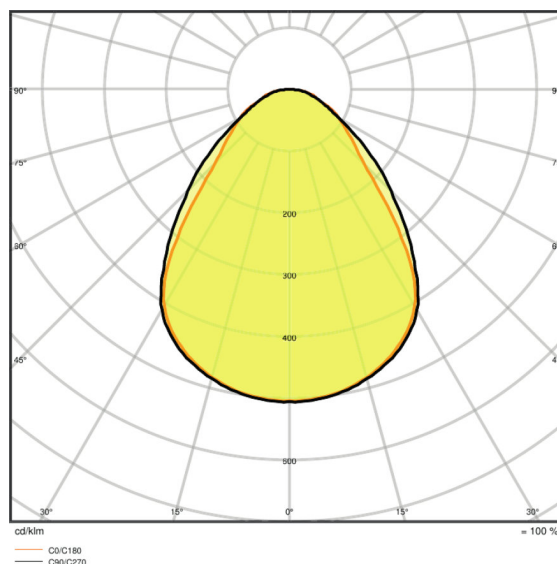
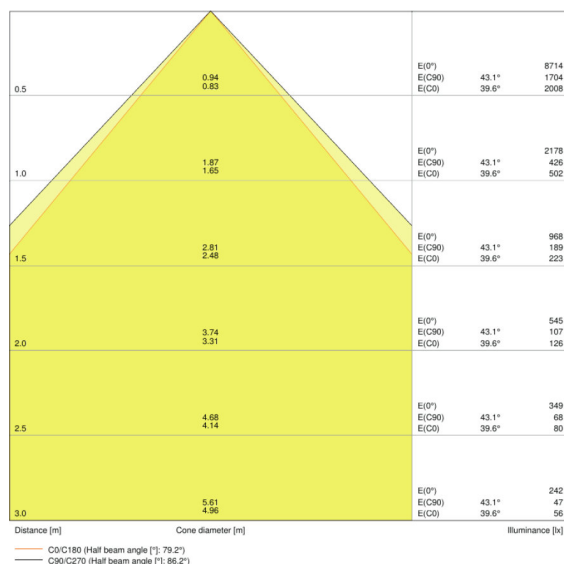
## Capabilities

<b>Dimmable</b>	Yes
<b>Type of connection</b>	Screwless terminal, 5-Pole (L, N, PE, DA+, DA-)
<b>LED module replaceable</b>	Not replaceable

### Certificates & standards

<b>Type of protection</b>	IP40/IP20
<b>Protection class</b>	II
<b>Protection class IK (shock resistance)</b>	IK03
<b>Glow Wire Test according to IEC 695-2-1</b>	650 °C
<b>Photobiological safety group EN62778</b>	RG 0
<b>Photobio. safety group acc. to EN62471</b>	RG 0
<b>Standards</b>	CE/CB/ENEC/EAC/RoHS

### Light Distribution



LDC typ cone

LDC typ polar

### EQUIPMENT / ACCESSORIES

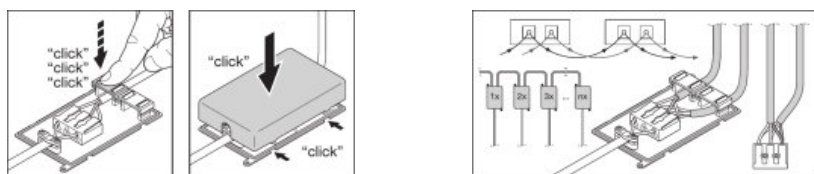
- Accessories for several mounting options available
- Connector box with 3-pole or 5-pole terminal included
- Security rope for luminaire included
- Security brackets included
- External control gear included

### LOGISTICAL DATA

Product code	Packaging unit (Pieces/Unit)	Dimensions (length x width x height)	Gross weight	Volume
4058075440470	Folding carton box 1	52 mm x 622 mm x 694 mm	2485.00 g	22.45 dm <sup>3</sup>
4058075440487	Shipping carton box 4	640 mm x 220 mm x 710 mm	11235.00 g	99.97 dm <sup>3</sup>

The mentioned product code describes the smallest quantity unit which can be ordered. One shipping unit can contain one or more single products. When placing an order, for the quantity please enter single or multiples of a shipping unit.

## ADDITIONAL CATALOG INFORMATION



## REFERENCES / LINKS

For Guarantee see

► [www.ledvance.com/guarantee](http://www.ledvance.com/guarantee)

## DISCLAIMER

Subject to change without notice. Errors and omission excepted. Always make sure to use the most recent release.