

# PRODUCT DATASHEET

## DL UGR19 PFM DN195 21 W 840 WT IP54

**DOWNLIGHT UGR19 | Low-glare downlights, suitable for computer screen workstations**



---

### AREAS OF APPLICATION

- Suitable for office applications, especially for computer screen workplaces
- Direct replacement for luminaires with compact fluorescent lamps
- Entrances / Hallways
- Bathrooms, kitchens and sheltered outdoor areas
- General illumination

---

### PRODUCT BENEFITS

- Good glare reduction ( $UGR < 19$ ) and cut off angle up to  $30^\circ$  for comfortable indoor lighting
- DALI 2.0 IoT driver already installed with individual luminaire current set-up (DALI version)
- Suitable for use in dusty and damp locations thanks to high IP rating

---

### PRODUCT FEATURES

- Available in 2 versions: with on/off driver and with DALI 2.0 IoT driver
- Housing material: Aluminum mirror-fished reflector
- Type of protection: IP54 (room side) / IP20 (back side)
- Connector box with push wire terminal for tool-free connection
- Through-wiring possible



## TECHNICAL DATA

### Electrical data

Nominal wattage	21.00 W
Operating mode	External LED driver
Nominal voltage	220...240 V
Power factor $\lambda$	$\geq 0.90$
Mains frequency	50/60 Hz
Max. no. of lum. on circuit break. B16 A	120
Max. no. of lum. on circuit break. C10 A	80
Max. no. of lum. on circuit break. C16 A	120
Inrush current	30 A
Total harmonic distortion	< 20 %
Inrush current time $T_{h50}$	200 $\mu$ s

### Luminaire control gear data

Low flicker	Yes
ECG - Length	114 mm
ECG - Width	45 mm
Output current	700 mA
ECG - Output ripple current	<10 %

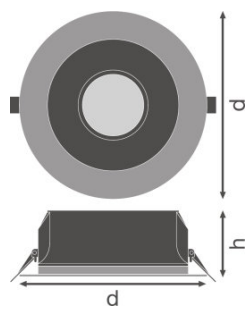
### Photometrical data

Color temperature	4000 K
Luminous flux	2520 lm
Luminous efficacy	120 lm/W
Standard deviation of color matching	$\leq 5$ sdcn
Light color (designation)	Cool White
Color rendering index Ra	$\geq 80$

### Light technical data

Beam angle	65.00 °
UGR lateral	<19
UGR longitudinal	<19

Dimensions & weight



Diameter	220.0 mm
Height	82.0 mm
Product weight	900.00 g
Mounting diameter	195.0 mm

Colors & materials

Body material	Aluminum
Product color	White
Housing color	White
Cover material	Polycarbonate (PC)
Light emitting surface material	Polycarbonate

Temperatures & operating conditions

Ambient temperature range	-20...+45 °C
---------------------------	--------------

Lifespan

Number of switching cycles	100000
Lifespan L70/B50 at 25 °C	70000 h
Lifespan L80/B10 at 25 °C	60000 h
Lifespan L90/B10 at 25 °C	40000 h

Additional product data

Mounting type	Recessed
Mounting location	Ceiling
Recommended control gear	OSRAM OTI DALI 50/220-240/1A4 NFC
Low flicker	Yes
Product remark	Available from September 2020

Capabilities

Dimmable	No
Type of connection	Screwless terminal
LED module replaceable	Not replaceable

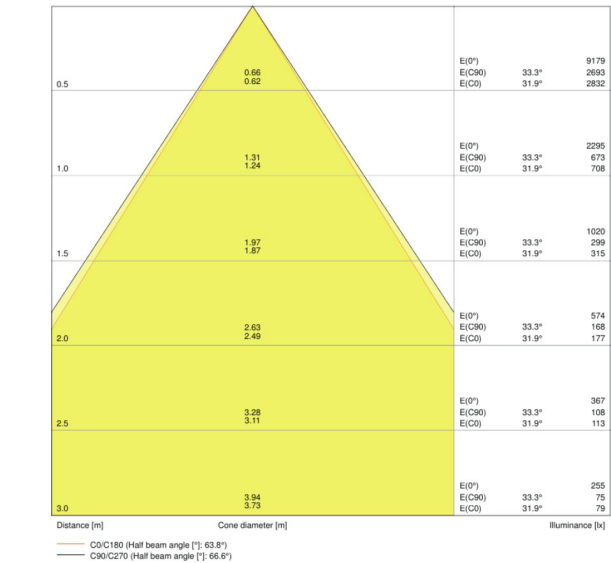
Certificates & standards

Protection class IK (shock resistance)	IK03
Glow Wire Test according to IEC 695-2-1	650 °C
Photobiological safety group EN62778	RG 1
Photobio. safety group acc. to EN62471	RG 0
Protection class	II
Type of protection	IP54/IP20
Standards	CE/CB/ENEC/TÜV SÜD/EAC/RoHS

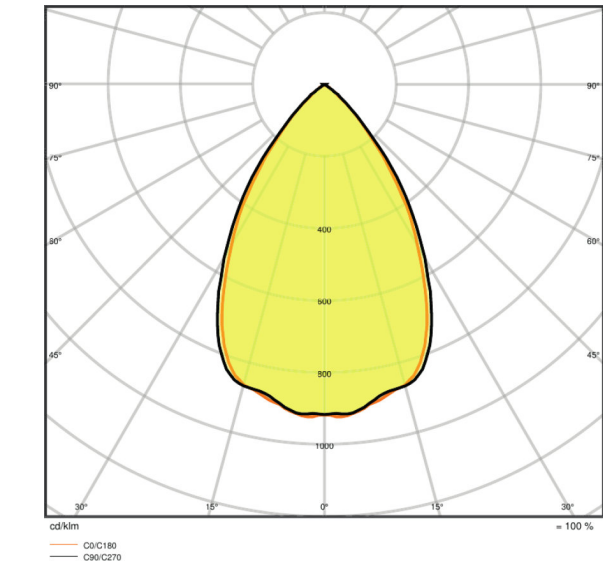
Logistical data

Temperature range at storage	-40...+70 °C
------------------------------	--------------

Light Distribution



LDC typ cone



LDC typ polar

EQUIPMENT / ACCESSORIES

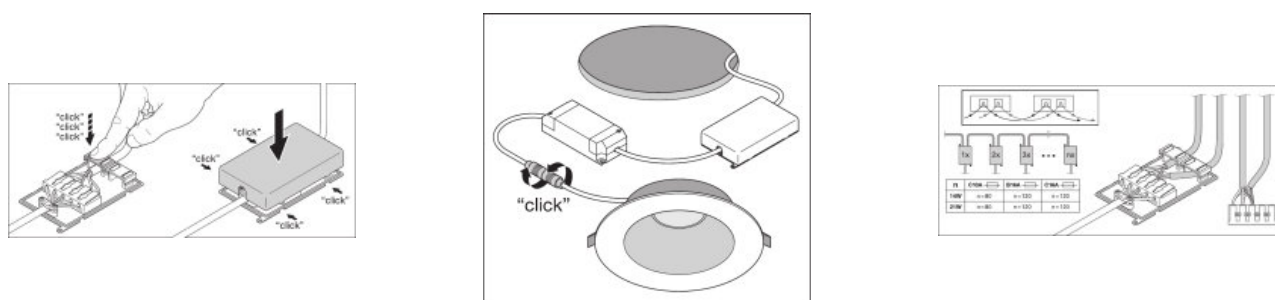
- External control gear included

LOGISTICAL DATA

Product code	Packaging unit (Pieces/Unit)	Dimensions (length x width x height)	Gross weight	Volume
4058075459274	Folding carton box 1	262 mm x 108 mm x 266 mm	1197.00 g	7.53 dm <sup>3</sup>
4058075459281	Shipping carton box 16	545 mm x 452 mm x 563 mm	20749.00 g	138.69 dm <sup>3</sup>

The mentioned product code describes the smallest quantity unit which can be ordered. One shipping unit can contain one or more single products. When placing an order, for the quantity please enter single or multiples of a shipping unit.

## ADDITIONAL CATALOG INFORMATION



## DISCLAIMER

Subject to change without notice. Errors and omission excepted. Always make sure to use the most recent release.