



**Auxiliary contact module, Side-mounting auxiliary contacts, 1 pole, 380 V
400 V 415 V: 4 A, 1 NC, Side mounted, Screw terminals**

Part no. DILA-XHI01-S
Catalog No. 115949
Alternate Catalog No. XTCEXSAB01
EL-Nummer (Norway) 4110210

Delivery program

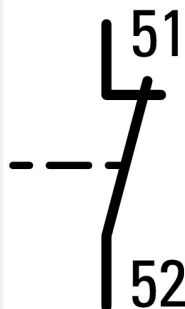
| | | | |
|----------------------|--|--|--|
| Accessories | | | Auxiliary contact modules |
| Description | | | with interlocked opposing contacts Switching elements according to EN 50005 Version E combinations correspond to EN 50011 and are to be preferred. The DC operated contactor DILA(C)-22 must only be combined with 2-pole auxiliary contacts. |
| Function | | | for standard applications |
| Number of poles | | | 1 pole |
| Connection technique | | | Screw terminals |

Rated operational current

| | | | |
|---|----------|---|----|
| Conventional free air thermal current, 1 pole | | | |
| Open | | | |
| at 60 °C | I_{th} | A | 16 |
| AC-15 | | | |
| 220 V 230 V 240 V | I_e | A | 4 |
| 380 V 400 V 415 V | I_e | A | 4 |

Contacts

| | | | |
|-----------------------|--|--|--------------|
| N/C = Normally closed | | | 1 NC |
| Mounting type | | | Side mounted |
| Contact sequence | | | |



| | | | |
|--------------|--|--|--|
| For use with | | | DILM7... DILM9... DILM12... DILM15... DILMP20... DILA... |
| Type | | | Side-mounting auxiliary contacts |
| Instructions | | | Interlocked opposing contacts according to IEC/EN 60947-5-1 appendix L, inside the auxiliary contact modules, also for the integrated auxiliary contacts of the DILM 7 - DILM32 Auxiliary contacts used as mirror contacts according to IEC/EN 60947-4-1 Appendix F (not N/C late open) |

Technical data

| | | | |
|--------------------------------------|------------|---------------|---------------------------------|
| Standards | | | IEC/EN 60947, VDE 0660, UL, CSA |
| Component lifespan | | | |
| at $U_e = 230\text{ V}$, AC-15, 3 A | Operations | $\times 10^6$ | 1.3 |

| | | | |
|---|--|-----------------|--|
| Climatic proofing | | | Damp heat, constant, to IEC 60068-2-78 Damp heat, cyclic, to IEC 60068-2-30 |
| Ambient temperature | | | |
| Open | | °C | -25 - +60 |
| Enclosed | | °C | - 25 - 40 |
| Ambient temperature, storage | | °C | - 40 - 80 |
| Degree of Protection | | | IP20 |
| Protection against direct contact when actuated from front (EN 50274) | | | Finger and back-of-hand proof |
| Weight | | kg | 0.024 |
| Terminal capacities | | mm ² | |
| Screw terminals | | | |
| Solid | | mm ² | 1 x (0.75 - 2.5) 2 x (0.75 - 2.5) |
| Flexible with ferrule | | mm ² | 1 x (0.75 - 2.5) 2 x (0.75 - 2.5) |
| Solid or stranded | | AWG | 18 – 14 |
| Pozidriv screwdriver | | Size | 2 |
| Standard screwdriver | | mm | 0.8 x 5.5 1 x 6 |
| Max. tightening torque | | Nm | 1.2 |

Contacts

| | | | |
|---|------------------|---------|--|
| Interlocked opposing contacts within an auxiliary contact module (to IEC 60947-5-1 Annex L) | | | Yes |
| N/C contact (not late-break contact) suitable as a mirror contact (to IEC/EN 60947-4-1 Annex F) | | | DILM7 - DILM15 |
| Rated impulse withstand voltage | U _{imp} | V AC | 6000 |
| Overvoltage category/pollution degree | | | III/3 |
| Rated insulation voltage | U _i | V AC | 690 |
| Rated operational voltage | U _e | V AC | 500 |
| Safe isolation to EN 61140 | | | |
| between coil and auxiliary contacts | | V AC | 400 |
| between the auxiliary contacts | | V AC | 400 |
| Rated operational current | | A | |
| Conventional free air thermal current, 1 pole | | | |
| at 60 °C | I _{th} | A | 16 |
| AC-15 | | | |
| 220 V 230 V 240 V | I _e | A | 4 |
| 380 V 400 V 415 V | I _e | A | 4 |
| 500 V | I _e | A | 1.5 |
| DC current | | | |
| | | | Switch-on and switch-off conditions based on DC-13, time constant as specified. |
| DC L/R ≤ 15 ms | | | |
| Contacts in series: | | A | |
| 1 | 24 V | A | 10 |
| 1 | 60 V | A | 6 |
| 1 | 110 V | A | 3 |
| 1 | 220 V | A | 1 |
| DC-13 (6xP) | | | |
| 24 V | I _e | A | 2.5 |
| 60 V | I _e | A | 1 |
| 110 V | I _e | A | 0.5 |
| 220 V | I _e | A | 0.25 |
| Control circuit reliability | Failure rate | λ | <10 ⁻⁸ , < one failure at 100 million operations (at U _e = 24 V DC, U _{min} = 17 V, I _{min} = 5.4 mA) |
| Short-circuit rating without welding | | | |
| Short-circuit protection maximum fuse | | | |
| 500 V | | A gG/gL | 10 |

| | | |
|--|----|-----|
| Current heat loss at I_{th} | | |
| AC operated | W | 1.6 |
| DC operated | W | 1.6 |
| Current heat loss per auxiliary circuit at I_e (AC-15/230 V) | CO | 0.1 |

Rating data for approved types

| | | |
|--------------------|---|------|
| Auxiliary contacts | | |
| Pilot Duty | | |
| AC operated | | A600 |
| DC operated | | P300 |
| General Use | | |
| AC | V | 600 |
| AC | A | 10 |
| DC | V | 250 |
| DC | A | 1 |

Design verification as per IEC/EN 61439

| | | | |
|--|------------|----|--|
| Technical data for design verification | | | |
| Rated operational current for specified heat dissipation | I_n | A | 4 |
| Heat dissipation per pole, current-dependent | P_{vid} | W | 0.1 |
| Equipment heat dissipation, current-dependent | P_{vid} | W | 0 |
| Static heat dissipation, non-current-dependent | P_{vs} | W | 0 |
| Heat dissipation capacity | P_{diss} | W | 0 |
| Operating ambient temperature min. | | °C | -25 |
| Operating ambient temperature max. | | °C | 60 |
| IEC/EN 61439 design verification | | | |
| 10.2 Strength of materials and parts | | | |
| 10.2.2 Corrosion resistance | | | Meets the product standard's requirements. |
| 10.2.3.1 Verification of thermal stability of enclosures | | | Meets the product standard's requirements. |
| 10.2.3.2 Verification of resistance of insulating materials to normal heat | | | Meets the product standard's requirements. |
| 10.2.3.3 Verification of resistance of insulating materials to abnormal heat and fire due to internal electric effects | | | Meets the product standard's requirements. |
| 10.2.4 Resistance to ultra-violet (UV) radiation | | | Meets the product standard's requirements. |
| 10.2.5 Lifting | | | Does not apply, since the entire switchgear needs to be evaluated. |
| 10.2.6 Mechanical impact | | | Does not apply, since the entire switchgear needs to be evaluated. |
| 10.2.7 Inscriptions | | | Meets the product standard's requirements. |
| 10.3 Degree of protection of ASSEMBLIES | | | Does not apply, since the entire switchgear needs to be evaluated. |
| 10.4 Clearances and creepage distances | | | Meets the product standard's requirements. |
| 10.5 Protection against electric shock | | | Does not apply, since the entire switchgear needs to be evaluated. |
| 10.6 Incorporation of switching devices and components | | | Does not apply, since the entire switchgear needs to be evaluated. |
| 10.7 Internal electrical circuits and connections | | | Is the panel builder's responsibility. |
| 10.8 Connections for external conductors | | | Is the panel builder's responsibility. |
| 10.9 Insulation properties | | | |
| 10.9.2 Power-frequency electric strength | | | Is the panel builder's responsibility. |
| 10.9.3 Impulse withstand voltage | | | Is the panel builder's responsibility. |
| 10.9.4 Testing of enclosures made of insulating material | | | Is the panel builder's responsibility. |
| 10.10 Temperature rise | | | The panel builder is responsible for the temperature rise calculation. Eaton will provide heat dissipation data for the devices. |
| 10.11 Short-circuit rating | | | Is the panel builder's responsibility. The specifications for the switchgear must be observed. |
| 10.12 Electromagnetic compatibility | | | Is the panel builder's responsibility. The specifications for the switchgear must be observed. |
| 10.13 Mechanical function | | | The device meets the requirements, provided the information in the instruction leaflet (IL) is observed. |

Technical data ETIM 7.0

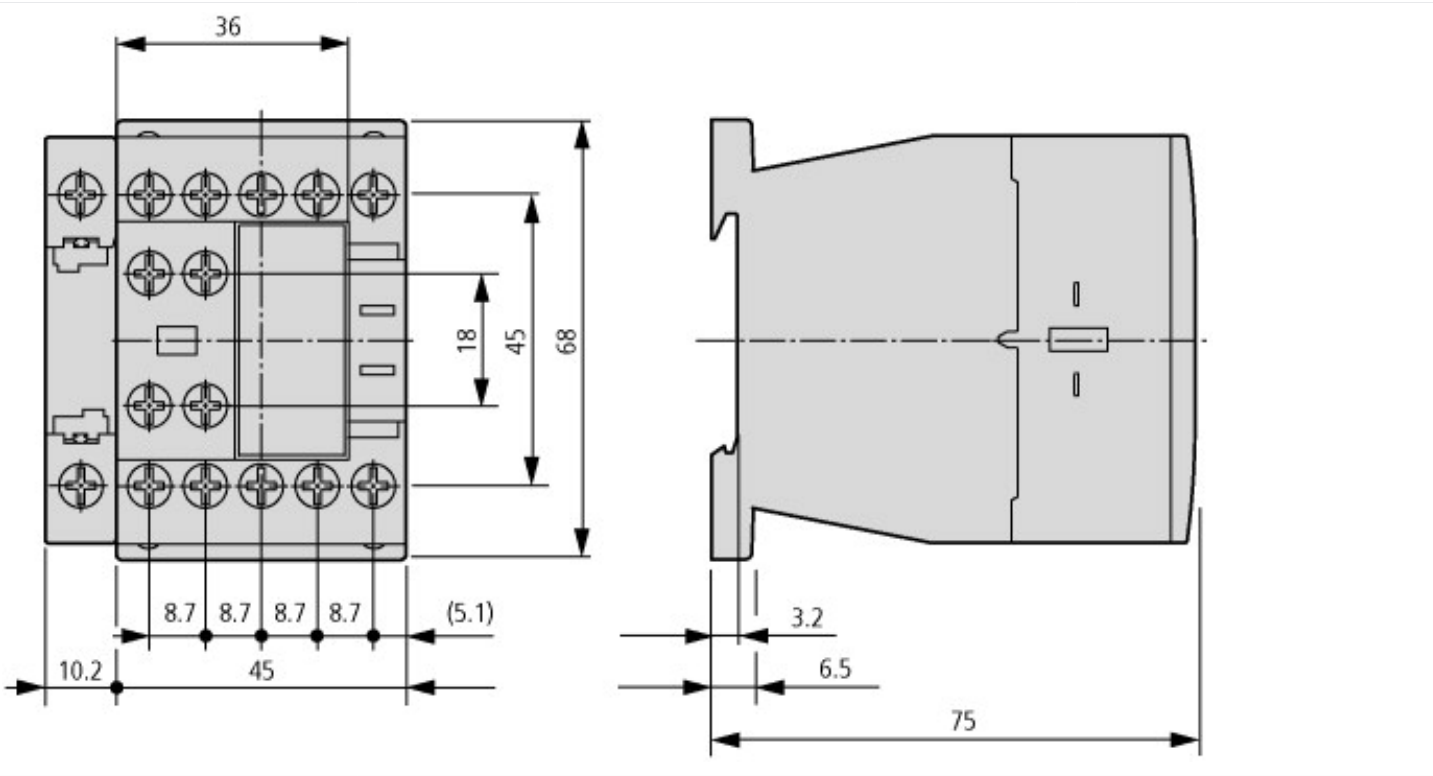
Low-voltage industrial components (EG000017) / Auxiliary contact block (EC000041)

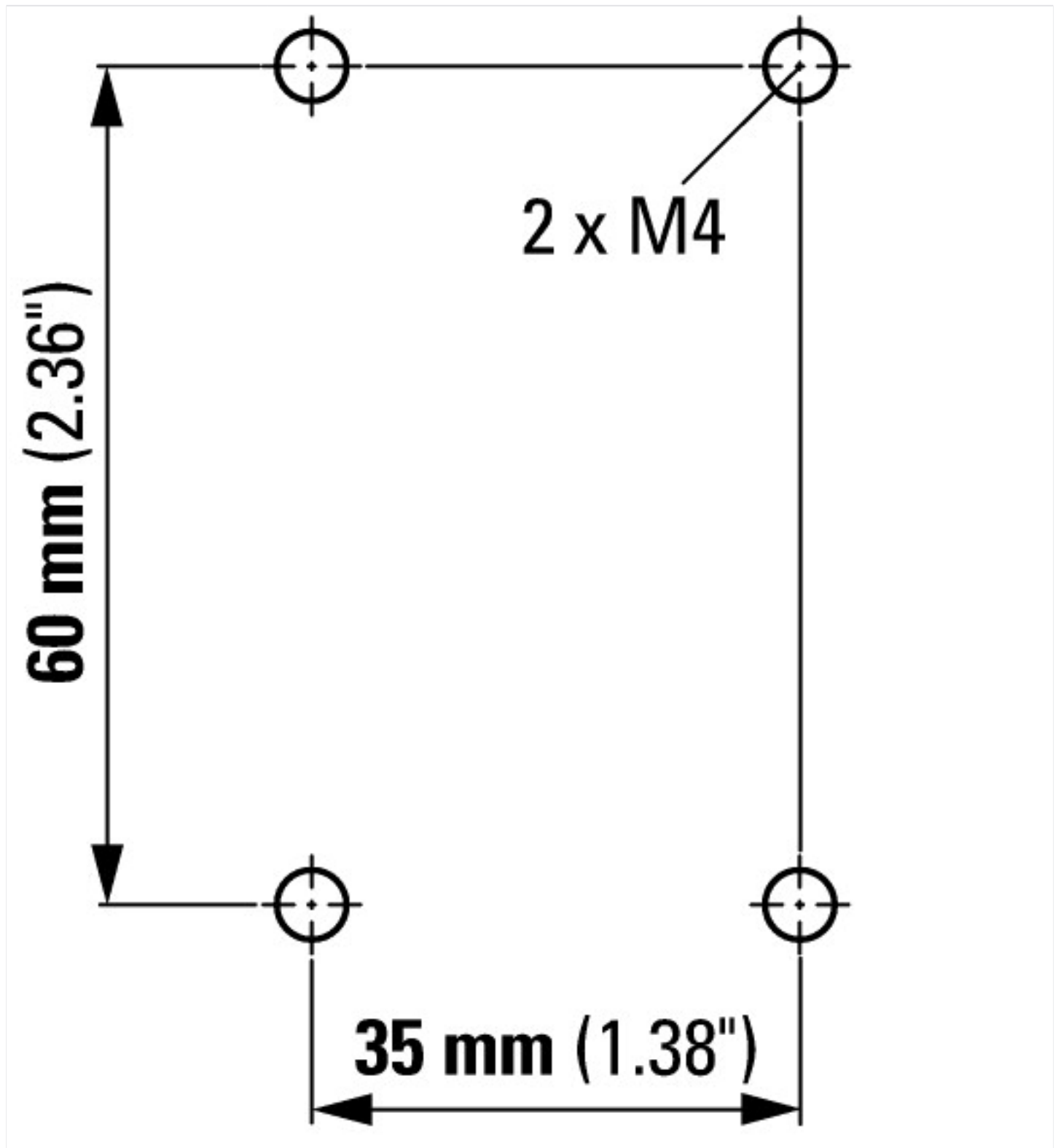
| | | |
|---|---|------------------|
| Number of contacts as change-over contact | | 0 |
| Number of contacts as normally open contact | | 0 |
| Number of contacts as normally closed contact | | 1 |
| Number of fault-signal switches | | 0 |
| Rated operation current Ie at AC-15, 230 V | A | 4 |
| Type of electric connection | | Screw connection |
| Model | | Top mounting |
| Mounting method | | Side mounting |
| Lamp holder | | None |

Approvals

| | | |
|--------------------------------------|--|---|
| Product Standards | | IEC/EN 60947-4-1; UL 508; CSA-C22.2 No. 14-05; CE marking |
| UL File No. | | E29184 |
| UL Category Control No. | | NKCR |
| CSA File No. | | 012528 |
| CSA Class No. | | 3211-03 |
| North America Certification | | UL listed, CSA certified |
| Specially designed for North America | | No |

Dimensions





Assets (links)

[Declaration of CE Conformity](#)

00002869

[Instruction Leaflets](#)

IL03407151Z2018_06