

Select your language

-
- German
 - English
 - French
 - Dutch
 - Italian
 - Polish
 - Czech
 - Russian
 - Norwegian Bokmål

Worldwide English

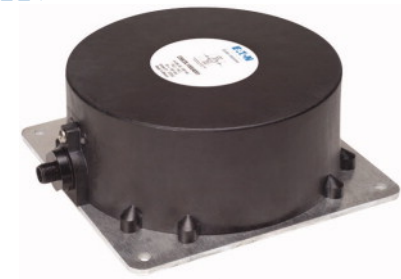


E56CDL100UAD01 - Proximity switch, inductive, 1NO+1NC, Sn=70mm, 4L, 6-48VDC, NPN, PNP, cubic 170mm, M12



136237 E56CDL100UAD01

[Overview](#) [Specifications](#) [Resources](#)



- Delivery program
- Technical data
 - Design verification as per IEC/EN 61439
- Technical data ETIM 7.0
- Approvals
- Dimensions

136237 E56CDL100UAD01

Proximity switch, inductive, 1NO+1NC, Sn=70mm, 4L, 6-48VDC, NPN, PNP, cubic 170mm, M12

Alternate Catalog No. E56CDL100UAD01

EL-Nummer (Norway) 0004315390

Proximity switch, Inductive Sensors, Product range: E56 Pancake Series, Connection: 4-wire, Design (outer dimensions): 171.5 x 171.5 x 67.4 mm, Rated operational voltage: Ue= 10 – 42 V DC, Rated switching distance: Sn= 100 mm, Type of mounting: Non-flush, Switching type: NPN, PNP, Plug-in connection M12 x 1, Contacts NC= Normally closed: 1 NC, Contacts NO= Normally open: 1 NO, Material: Insulated material, Degree of Protection: IP67, Standards: IEC/EN 60947-5-2

Delivery program

Basic function
Inductive Sensors
Product range
E56 Pancake Series
Connection
4-wire
Design (outer dimensions)
171.5 x 171.5 x 67.4 mm
Rated operational voltage [U_e]
10 – 42 V DC
Rated switching distance [S_n]
100 mm
Type of mounting
Non-flush
Switching type
NPN
PNP
For connection of:
Plug-in connection M12 x 1
Contacts
NC= Normally closed
1 NC
NO= Normally open
1 NO
Material
Insulated material
Degree of Protection
IP67

Technical data

General
Standards
IEC/EN 60947-5-2
Ambient temperature
-25 - +70
Degree of Protection
IP67
Characteristics
Rated switching distanceRated switching distance [S_n]
100 mm
Repetition accuracy of S_n
2 %
Temperature drift of S_n
10 %
Switching hysteresis of S_n
15 %
Rated operational voltage [U_e]
10 – 42 V DC

Maximum load current [I_b]
 < 300 mA
 Operating current in the switched state at 24 V DC [I_b]
 25 mA
 Voltage drop at I_b [U_b]
 2.5 V
 Switching Frequency
 20 Hz
 Min. load current [I_b]
 1 mA
 Residual current through the load in the blocked state at 230 V AC and 24 V DC [I_r]
 0.15 mA
 Switching state display
 Red LED
 Operating voltage display
 Green LED
 Protective functions
 Short-circuit protective device
 Protection against polarity reversal
 Connection
 4-wire
 Contacts NC = Normally closed
 1 NC
 Contacts NO = Normally open
 1 NO
 Style Design (outer dimensions)
 171.5 x 171.5 x 67.4 mm
 For connection of:
 Plug-in connection M12 x 1
 Material
 Insulated material
 Surface finish
 FPS

Design verification as per IEC/EN 61439

Operating ambient temperature min.
 -25 °C
 Operating ambient temperature max.
 +70 °C

Technical data ETIM 7.0

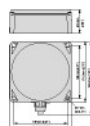
Sensors (EG000026) / Inductive proximity switch (EC002714)
 Electric engineering, automation, process control engineering / Binary sensor technology, safety-related sensor technology / Proximity switch / Inductive proximity switch (ecl@ss10.0.1-27-27-01-01 [AGZ376015])
 Width sensor
 171.5 mm
 Height of sensor
 67.4 mm
 Length of sensor
 171.5 mm
 Diameter sensor
 0 mm
 Mechanical mounting condition for sensor
 Not flat
 Switching distance
 100 mm
 Suitable for safety functions
 No
 Type of switch function
 Anticoincidence
 Type of switching output
 PNP/NPN
 Type of electric connection
 Connector M12
 Number of semiconductor outputs with signalling function
 1
 Number of contact energized outputs with signalling function
 0
 Number of protected semiconductor outputs
 0
 Number of protected contact energized outputs
 0
 Type of actuation
 Metallic Target
 Type of interface
 None
 Type of interface for safety communication
 None
 Construction type housing
 Cuboid
 Coating housing
 Other
 Cascadable
 No
 Category according to EN 954-1

B
SIL according to IEC 61508
None
Performance level acc. EN ISO 13849-1
None
Max. output current at protected output
0 mA
Supply voltage
6 - 48 V
Rated control supply voltage U_s at AC 50Hz
0 - 0 V
Rated control supply voltage U_s at AC 60Hz
0 - 0 V
Rated control supply voltage U_s at DC
6 - 48 V
Voltage type
DC
Switching frequency
20 Hz
With monitoring function downstream switching devices
No
Material housing
Plastic
Compression-resistant
No
Explosion safety category for gas
None
Explosion safety category for dust
None
Interference resistance to magnetic fields

Approvals

Product Standards
UL 508; CSA-C22.2 No. 14; IEC60947-5-2; CE marking
UL File No.
E166051
UL Category Control No.
NRK1, NRK1-7
CSA File No.
UL report applies to both Canada and US
CSA Class No.
—
North America Certification
UL listed, certified by UL for use in Canada
Max. Voltage Rating
48 V DC
Degree of Protection
IEC: IP67, IP69K; UL/CSA Type: 4, 4x, 6, 6P, 12, 13

Dimensions



Product photo



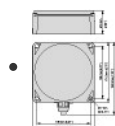
Photo
Product photo
Photo

3D drawing



1360DRV-36
3D drawing
Line drawing

Dimensions single product



1360DIM-311
Dimensions single product
Line drawing

Inductive sensor: E56 series pancake

Instruction Leaflet

- [Inductive sensors: Pancake Series \(IL05301008Z\)](#)
Instruction Leaflet
(PDF, International)

Declaration of Conformity

- [DA-DC-00002423](#)
Declaration of Conformity
(PDF)

Download-Center

- [Download-Center \(this item\)](#)
Eaton EMEA Download-Center - download data for this item
- [Download-Center](#)
Eaton EMEA Download-Center

 [Generate data sheet in PDF format](#)

 [Generate data sheet in Excel format](#)

 [Write a comment](#)

[Imprint](#) [Privacy Policy](#) [Legal Disclaimer](#) [Terms and Conditions](#)
© 2020 by Eaton Industries GmbH

