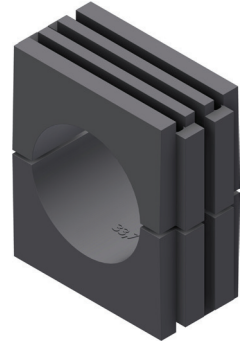


# Product Data Sheet

Part no.	Name	Type
1384920	INKO Module Base Unit INKO-M BU 34 Polypropyl	INKO-M BU 34

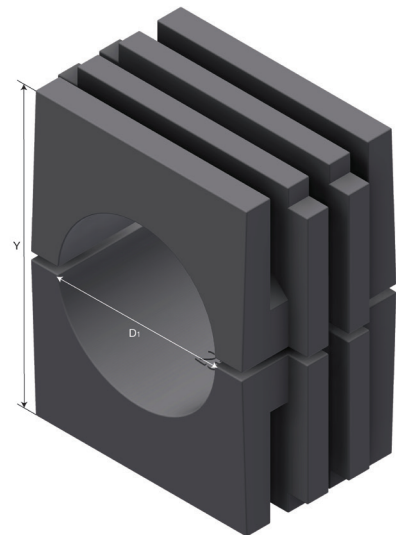
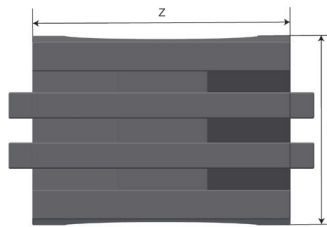
**Description:** Clamp Halves for the INKO® Module Clamp system.



**Additional information:** For Module base units from 21 to 42 mm tubing: Place a Base Plate and then the first half part of the tubing clamp into the steel module base before placing the tube. Add the second half part and a Top Pressure Plate before fixing with the Lock Plate. To add an additional level to the module: Release the Lock Plate and remove the Pressure Plate on top of the clamp halves surrounding the tubing. Place a single bolted module base where the Pressure Plate was and retighten using the Lock Plate.


## Characteristics

Name	Value
Weight (kg)	0.01
X (mm)	24.9
Y (mm)	57
Z (mm)	46
D1 Diameter (mm)	33.7 1" pipe
Torque (Nm)	16
Tubing Size (mm)	34



Product images are a general representation of the product design however some variances may occur.

## Product packaging information

<b>F-PAK GTIN</b>	<b>Single piece</b>	 7 070693849203
<b>D-PAK GTIN</b>		