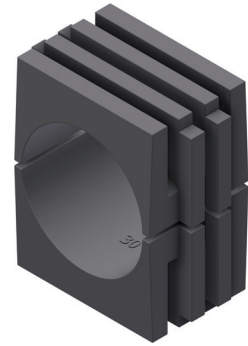


# Product Data Sheet

Part no.	Name	Type
1384918	INKO Module Base Unit INKO-M BU 30 Polypropyl	INKO-M BU 30

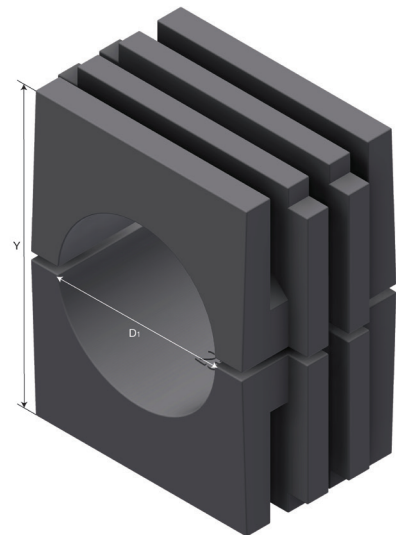
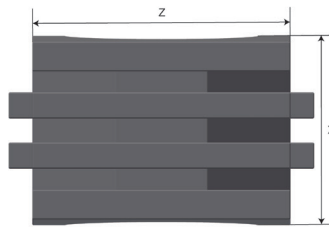
**Description:** Clamp Halves for the INKO® Module Clamp system.



**Additional information:** For Module base units from 21 to 42 mm tubing: Place a Base Plate and then the first half part of the tubing clamp into the steel module base before placing the tube. Add the second half part and a Top Pressure Plate before fixing with the Lock Plate. To add an additional level to the module: Release the Lock Plate and remove the Pressure Plate on top of the clamp halves surrounding the tubing. Place a single bolted module base where the Pressure Plate was and retighten using the Lock Plate.


## Characteristics

Name	Value
Weight (kg)	0.01
X (mm)	24.8
Y (mm)	45
Z (mm)	33.8
D1 Diameter (mm)	30
Torque (Nm)	16
Tubing Size (mm)	30



Product images are a general representation of the product design however some variances may occur.

## Product packaging information

<b>F-PAK GTIN</b>	<b>Single piece</b>	 7070693849180
<b>D-PAK GTIN</b>		