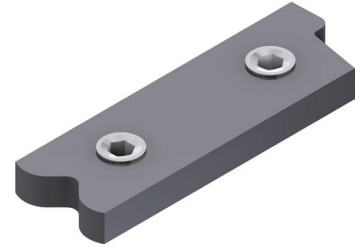


Product Data Sheet

Part no.	Name	Type
1384925	INKO Module Lock Plate INKO-M FC 14-20 SS	INKO-M FC 14-20

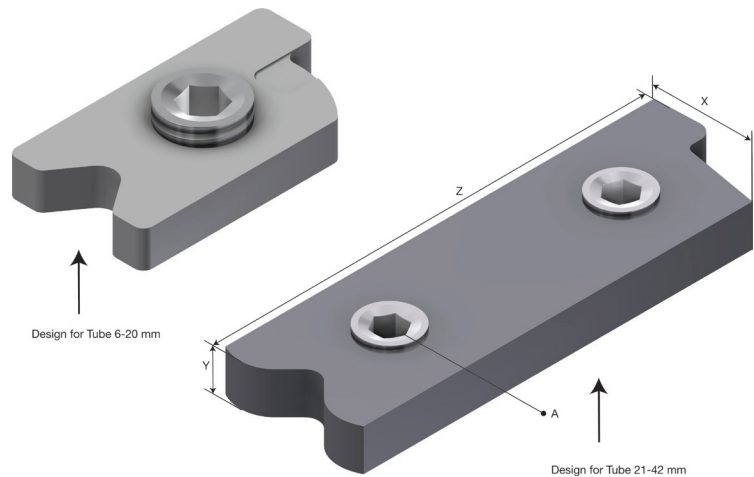
Description: Lock Plate to fix the INKO Module Clamp System.



Additional information: For Module base units from 6 to 20 mm tubing: Position the first half part of the tubing clamp into the steel module base before placing the tubing. Add the second half part and a Pressure Plate before fixing with the Lock Plate. To add an additional level to the module: Release the Lock Plate and remove the Pressure Plate on top of the clamp halves surrounding the tubing. Place a single bolted module base where the Pressure Plate was and retighten using the Lock Plate.


Characteristics

Name	Value
Weight (kg)	0.03
T Material Thickness (mm)	5
X (mm)	20.5
Y (mm)	5
Z (mm)	37
A Hole Size (mm)	8x10
Torque (Nm)	16



Product images are a general representation of the product design however some variances may occur.

Product packaging information

F-PAK GTIN	Single piece	 7070693849258
D-PAK GTIN		