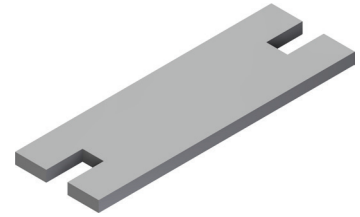


# Product Data Sheet

Part no.	Name	Type
1384935	INKO Module Base Plate INKO-M BP 32-42U SS	INKO-M BP 32-42U

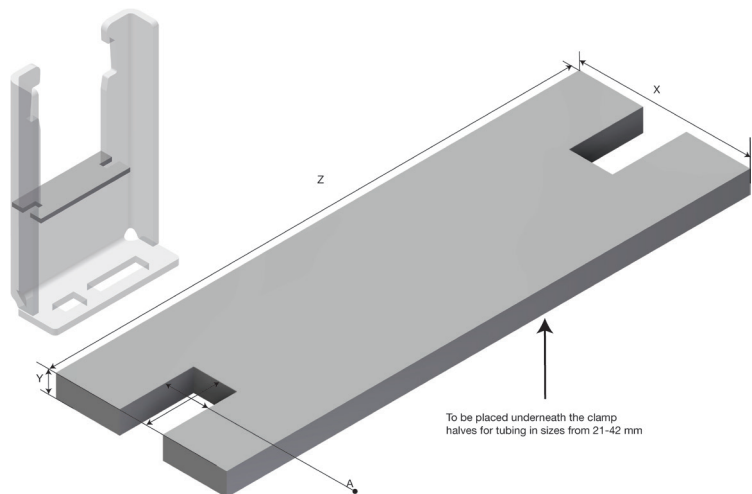
**Description:** Base Plate to install INKO Module Clamp.



**Additional information:** For Module base units from 21 to 42 mm tubing: Place a Base Plate and then the first half part of the tubing clamp into the steel module base before placing the tubing. Add the second half part and a Top Pressure Plate before fixing with the Lock Plate. To add an additional level to the module: Release the Lock Plate and remove the Pressure Plate on top of the clamp halves surrounding the tubing. Place a single bolted module base where the Pressure Plate was and retighten using the Lock Plate.

## Characteristics

Name	Value
Weight (kg)	0.01
T Material Thickness (mm)	2
X (mm)	15
Y (mm)	2
Z (mm)	57
A Hole Size (mm)	3,8x6



Product images are a general representation of the product design however some variances may occur.

## Product packaging information

<b>F-PAK GTIN</b>	<b>Single piece</b>	 7070693849357
<b>D-PAK GTIN</b>		