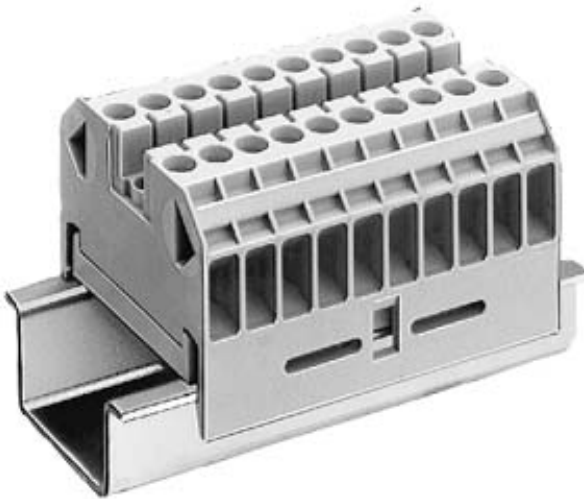


THROUGH-TYPE TERMINAL THERMOPL. SCREW
 TERMINAL ON BOTH ENDS TERMINAL BLOCK 10POLE,
 BEIGE W. INSCRIPTION 1...10 61MM,
 SZ. 2.5



Similar to image

Technical data:

Type of mounting		DIN rail 35 mm
Length	mm	41
Height of lowest mounting type	mm	26
Terminal contact spacing	mm	61
Combustibility class acc. to UL 94		V2
Color		beige
Insulation material		thermoplastic
Position / of terminal		lateral
Operating voltage / rated value	V	800
Operating current / rated value	A	24
Product component / required / connection plate		No
Design of terminal / terminal levels linked internally		No
Design tested acc. to type of protection / EEx e		No
Number of terminal levels		1
Number of terminal points / per terminal level		2
Section de conducteur raccordable		
<ul style="list-style-type: none"> • solid • minimum 	mm ²	2.5

<ul style="list-style-type: none"> • maximum 	mm ²	2.5
<ul style="list-style-type: none"> • multibrin 		
<ul style="list-style-type: none"> • minimum 	mm ²	2.5
<ul style="list-style-type: none"> • maximum 	mm ²	2.5
<ul style="list-style-type: none"> • finely stranded / without wire end processing 		
<ul style="list-style-type: none"> • minimum 	mm ²	2.5
<ul style="list-style-type: none"> • maximum 	mm ²	2.5
Ambient temperature / during operating		
<ul style="list-style-type: none"> • minimum 	°C	-25
<ul style="list-style-type: none"> • maximum 	°C	55
Conductor cross-section that can be connected / finely stranded / with wire end processing		
<ul style="list-style-type: none"> • minimum 	mm ²	2.5
<ul style="list-style-type: none"> • maximum 	mm ²	2.5
Design of the electrical connection		
<ul style="list-style-type: none"> • 1 		screw-type terminal
<ul style="list-style-type: none"> • 2 		screw-type terminal

Certificates/approvals:

General Product Approval



EG-Konf.

Shipping Approval



other

[Environmental Confirmations](#)

Further information:

Information- and Downloadcenter (Catalogs, Brochures,...)

<http://www.siemens.com/lowvoltage/catalogs>

Industry Mall (Online ordering system)

<http://www.siemens.com/lowvoltage/mall>

Service&Support (Manuals, Certificates, Characteristics, FAQs,...)

<http://support.automation.siemens.com/WW/view/en/8WA1011-ODF22/all>

Image database (product images, 2D dimension drawings, 3D models, device circuit diagrams, ...)

http://www.automation.siemens.com/bilddb/cax_en.aspx?mlfb=8WA1011-ODF22

CAX-Online-Generator

<http://www.siemens.com/cax>

last change:

Mar 11, 2013