



Light grey



Blue

CONTENT

Page

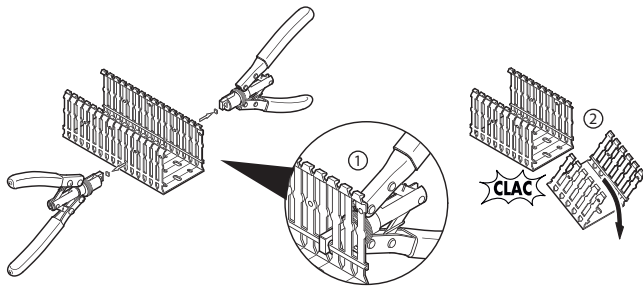
1. General characteristics	1
2. Range	2
3. Technical characteristics.....	2
4. Dimensions.....	3
5. Accessories	4

1. GENERAL CHARACTERISTICS

Legrand halogen free cable ducting is used to organise running the wiring vertically and horizontally inside a control system or distribution electrical enclosure.

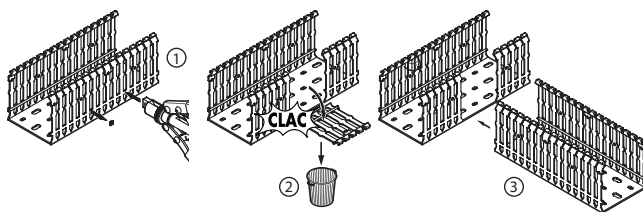
The range extends from dimension 25x25 to 120x80 mm.

Legrand halogen free ducting can be cut to length without using a saw. After making 2 lateral cuts with the Legrand tool cat. no. 0 367 10, the ducting can be separated manually by a simple snap, thanks to the cut-outs on the bottom (quick, no dust, no burrs).

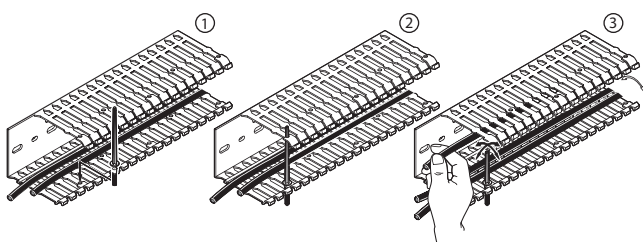


They can be used to create a T junction between vertical and horizontal ducting all the way along, without obstacles.

After cutting with the Legrand tool cat. no. 0 367 10, the side detaches easily thanks to the prescribed breaking line at the base of the ducting.

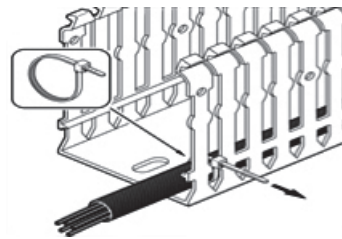


Wire-retaining clips can be passed through holes positioned at regular intervals along the tab ends to prevent the wires escaping from the ducting during installation. The clips can be left in place even after the cover is fitted.



1. GENERAL CHARACTERISTICS (continued)

The ducting allows a cable tie to pass through the lateral perforations at the base of the ducting to clamp a sleeve or a cable.



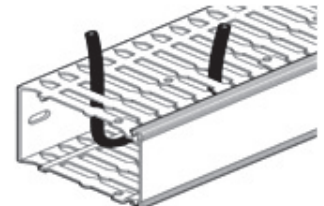
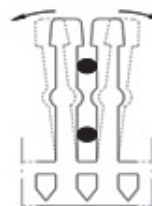
The ends on Legrand halogen free ducting tabs are designed to prevent injury. The space between two tabs is 6 mm, which allows a 1.5 mm² cross-section cable maximum to pass through without breaking the tab.



The height between the base of the ducting and the stiffener must not exceed 20% of the total height. Wires can be introduced very close to the baseplate by removing the link between the two tabs using the Legrand cutter tool cat. no. 0 367 10.

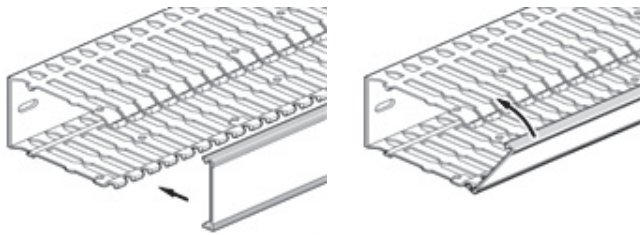


The bosses can be used to hold the wires at the bottom of the ducting to prevent them escaping during wiring. They also mean that two wiring levels can be used.

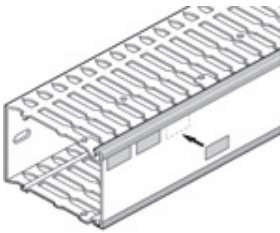


1. GENERAL CHARACTERISTICS (continued)

The cover is easily fitted on the ducting either by clipping on the front or by rotating it. It can be opened without special tools.



The ridges on the edges of the ducting make it easier to align the labels.



2. RANGE

Two cable ducting ranges depending on use:

- Light grey
- Blue

Length 2 m.

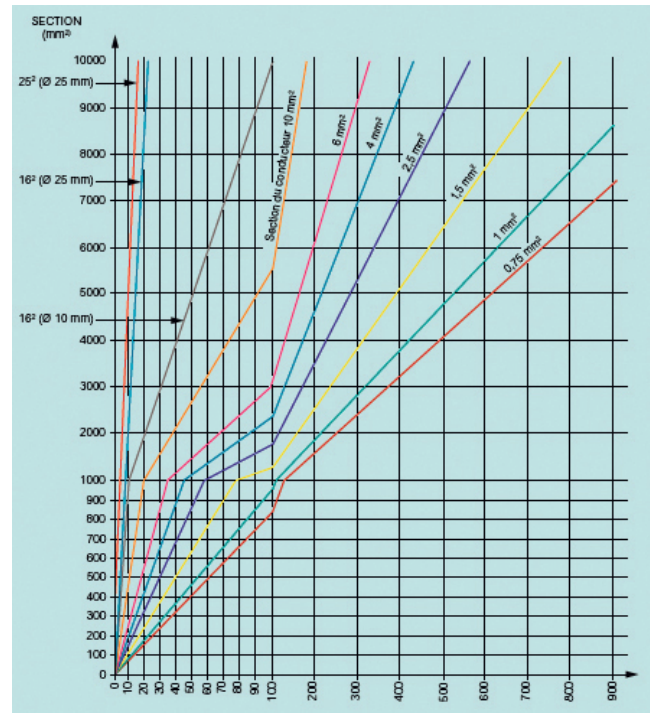
Cat. No.		Width (mm)	Height (mm)	Cross-section	Pack of (m)	Weight (kg/m)
Light grey	Blue					
6 362 00		25	25	25x25	60	0,227
6 362 01	6 362 51	25	40	25x40	56	0,263
6 362 02	6 362 52	25	60	25x60	56	0,311
6 362 06	6 362 56	40	40	40x40	48	0,350
6 362 07	6 362 57	40	60	40x60	48	0,379
6 362 08	6 362 58	40	80	40x80	40	0,445
6 362 12	6 362 62	60	60	60x60	32	0,485
6 362 13	6 362 63	60	80	60x80	32	0,562
6 362 17		80	80	80x80	24	0,672
6 362 25		120	80	120x80	16	0,952

3. TECHNICAL CHARACTERISTICS

3.1 Cabling capacity

Cross-section	Capacity (mm ²)	Cross-section	Capacity (mm ²)
25x25	391	40x80	2717
25x40	720	60x60	3115
25x60	1159	60x80	4216
40x40	1245	80x80	5715
40x60	2007	120x80	8729

Wire dimensions chart:



Example: 40x60 ducting = 2007 mm² capacity, or approximately:

- 250 wires 0.75 mm²
- 210 wires 1 mm²
- 160 wires 1.5 mm²
- etc.

3.2 Standards

- Conforming to standard EN 50 085 part 2-3
- Conforming to ROHS: lead and cadmium-free
- Approvals: UL, CSA and NF

3.3 Product classification according to EN 50085-2-3

- Non-metal product
- Method of opening cover: no tools required
- Minimum storage and transport temperature: - 25°C
- Maximum operating temperature: + 90°C
- Flame-retardant
- No electrical continuity
- Electrically insulating
- Installation position: on vertical or horizontal surface, cover facing down not permitted

3. TECHNICAL CHARACTERISTICS (continued)

■ **3.4 Material**

Performance of material:

Characteristics	PC/ABS	Unit of measurement	Standards
Physical			
Specific gravity	1.18	g/cm ²	ISO 1183
Water absorption	0.60	%	ISO 62
Mechanical			
Ultimate tensile strength	55	MPa	ISO 527
Tensile load	65	MPa	ISO 527
Breaking elongation	55	%	ISO 527
Elastic bending modulus	2.700	MPa	ISO 178
Thermal			
VICAT temperature	110	°C	ISO 306
Operating temperature	-5 à +90	°C	EN 50085-2-3
HDT temperature	91	°C	ISO 75
Expansion	< 8 X 10 ⁻⁵	°K ⁻¹	DIN 53762
Electrical			
Dielectric constant	-	-	ASTM D150
Dielectric strength	25	KV/mm	IEC 243
Surface resistivity	> 1 x 10 ¹⁵	Ohm	IEC 93
Fire behaviour			
UL94 classification	VO (1.5 mm)	-	UL 94
M classification	M2	-	NF P 92-501
Glow-wire	850	°C	IEC 695-2-1
Oxygen index	> 37	%	ISO 4589

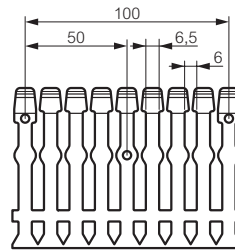
Cable ducting calorific value:

Cat. No.	Material	Dimensions	Total (MJ/kg)
6 362 00	PC/ABS	25x25	13.340
6 362 01/51	PC/ABS	25x40	15.272
6 362 02/52	PC/ABS	25x60	18.538
6 362 06/56	PC/ABS	40x40	20.424
6 362 07/57	PC/ABS	40x60	22.632
6 362 08/58	PC/ABS	40x80	25.162
6 362 12/62	PC/ABS	60x60	28.198
6 362 13/63	PC/ABS	60x80	33.304
6 362 17	PC/ABS	80x80	37.729
6 362 25	PC/ABS	120x80	53.802

4. DIMENSIONS

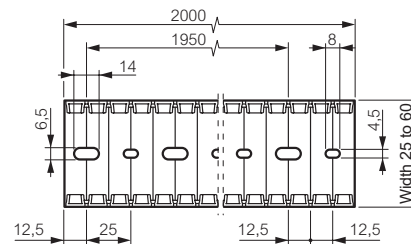
Dimensions are in mm.

■ **4.1 Lateral perforations**

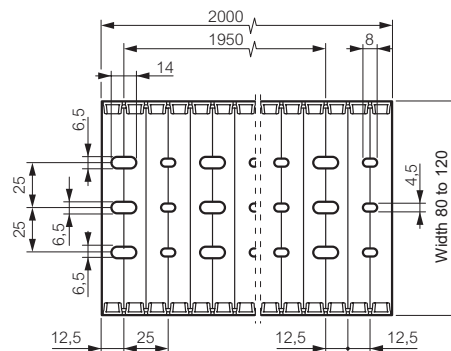


■ **4.2 Perforations on the base**

Width 25 to 60



Width 80 to 120



5. ACCESSORIES

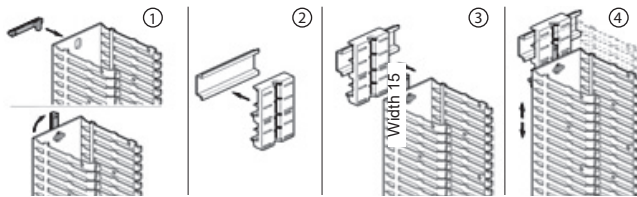
5.1 Fixing accessories

5.1.1 Linafix screwless fixing

Cat. No.	Description
0 367 00	Rail-fixing accessory for vertical ducting




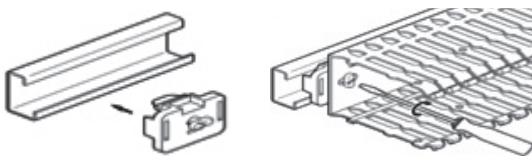
- Used to fix vertical ducting on a rail.
- Polyamide 6-6.



Cat. No.	Description
0 366 40	Rail-fixing accessory for horizontal ducting



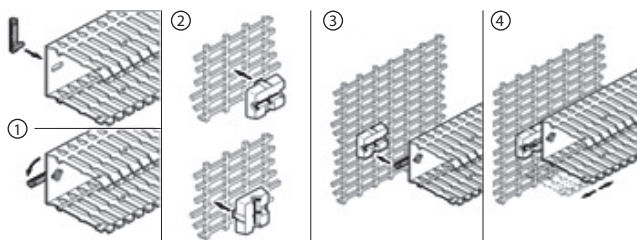
- Used to fix horizontal ducting on a  rail, depth 15 mm.
- Cable ducting fixing on accessory by 1/4 turn.
- Polyamide 6-6.



Cat. No.	Description
0 366 41	Accessory for fixing on Lina 25 perforated plate



- Used to fix ducting on a Lina 25 perforated plate.
- Polyamide 6-6.



5. ACCESSORIES (continued)

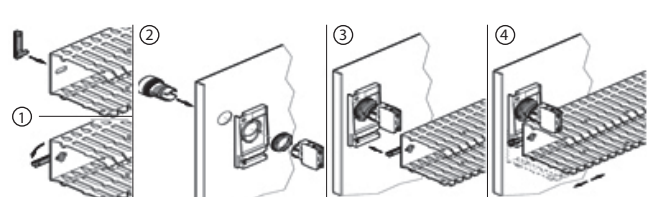
5.1 Fixing accessories (continued)

5.1.1 Linafix screwless fixing (continued)

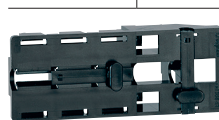
Cat. No.	Description
0 366 42	Accessory for fixing to door

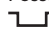


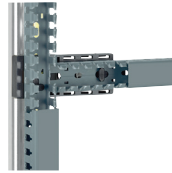
- Used to fix ducting to a door (without glue).
- Fits onto Osmoz control and signalling auxiliaries (Ø 22 mm).
- Polyamide 6-6.



Cat. No.	Description
0 366 43	Accessory for fixing on Lina 25 upright



- Use to fix vertical ducting on Lina 25 upright, and horizontal ducting.
- Double adjustment enables alignment with perforations at the bottom of cable ducting.
- Possible horizontal reinforcement with rail  15 mm depth.
- Polyamide 6-6.



5.1.2 Self drilling/tapping screw

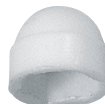
Cat. No.	Description
0 347 45	H 4.8 x 16 mm screw



- Use to fix ducting on a Lina 12.5 plate (Ø 3.3 mm).
- Zinc-plated steel.

5.1.3 Isolating screw cover

Cat. No.	Description
0 347 50	Screw cover for isolating screw head cat. no. 0 347 45



- Use to isolate the head of the screw cat. no. 0 347 45 inside ducting.
- Polyethylene.

5. ACCESSORIES (continued)

5.1 Fixing accessories (continued)

5.1.4 Plastic rivets

Cat. No.	Description	Ø head (mm)
0 366 46	Standard rivet Ø 6 mm ⁽¹⁾	10
0 366 44	Reinforced rivet Ø 6 mm ⁽²⁾	10

⁽¹⁾ Drilling diameter: 5.5 to 6 mm

⁽²⁾ Drilling diameter: 6.5 mm

Standard



- Used to fix the ducting on a solid plate without needing to tap holes.

Reinforced



- The reinforced rivet enables to fix cable ducting in 6.5 mm hole of Lina 12.5 plate and perforated Lina 25 plate for Atlantic and Marina cabinets.

- Polyamide 6-6.

5.2 Cutter tool

Cat. No.	Description
0 367 10	Tool for cutting ducting to required length



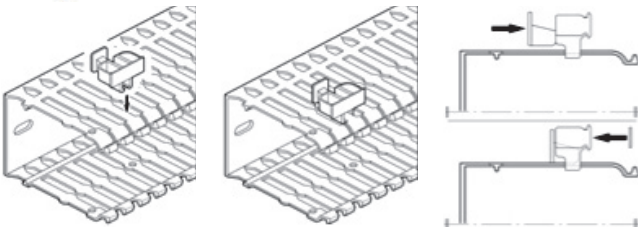
5.3 Linagraf labelling accessories

5.3.1 Label-holder

Cat. No.	Description
0 367 02	Label-holder



- Used to label the ducting directly.
- Clips onto a tab.
- Can take a self-adhesive label 30 x 10 mm max.
- ABS



5. ACCESSORIES (continued)

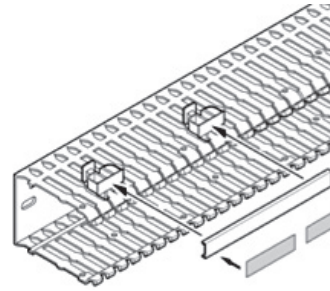
5.3 Linagraf labelling accessories (continued)

5.3.2 Marking extension strip

Cat. No.	Description
0 370 10	Marking extension ducting strip



- Used to label the ducting directly with a long text.
- Clips onto label-holder cat. no. 0 367 02.
- Length 2 m.
- PVC

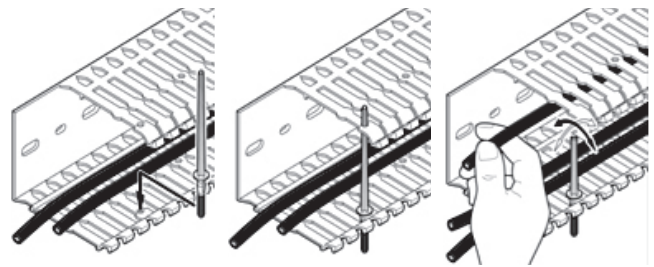


5.4 Wiring accessories

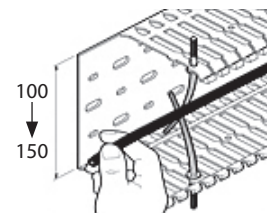
5.4.1 Wire-retaining clip

Cat. No.	Description
0 367 01	Wire-retaining clip

- Clips can be used to hold the wires at the bottom of the ducting, and keep them in place during wiring.
- Total length 83 mm.



- For wider ducting, two clips placed opposite one another can be used to hold the wires in place.



5. ACCESSORIES (continued)

■ 5.4 Wiring accessories (continued)

5.4.2 Braided sleeving

Cat. No.	Description
0 366 38	Braided sleeving for door Ø 20 mm ⁽¹⁾
0 366 39	Braided sleeving for door Ø 30 mm ⁽²⁾

⁽¹⁾ Variation in diameter: 10 to 30 mm

⁽²⁾ Variation in diameter: 18 to 54 mm



- Supplied in 50 m roll in dispenser box
- Black Polyester

5.4.3 Spiral sleeves

Cat. No.	Description
6 361 78	Spiral sleeve Ø 12 mm
6 361 83	Spiral sleeve Ø 22 mm



- Colourless