



# HF-Selectalume II for TL-D lamps

## HF-S 118/136 TL-D II 220-240V 50/60Hz

HF-Selectalume II TL-D is the most cost-effective, reliable and outstanding solution for fluorescent lamps. These ballasts are part of an overall high-efficiency lighting system that may help you or your customers to achieve any international or local energy code you need to comply with. HF-Selectalume II TL-D ballasts are the ideal choice for a broad range of new construction and retrofit applications within the commercial sector, including general surface mounting or office lighting, parking garages, warehouses, waterproof and other applications. The ballast is primarily designed for Indoor application. For outdoor application, the luminaire should be minimum Classland need to be sufficiently protected against water & dust. The installation should also be guard against any lightening surge or any other necessary electrical protection as deemed in such typical installation & application.

### Product data

General Information			
Application Code	II	Power Factor 100% Load (Nom)	0.98
Type Version	mk1	Preheat Time	1.6 s
Lamp Type	TL-D	Mains Voltage Performance (AC)	202-254V-8%-+6%
Number of Lamps	1 piece/unit	Mains Voltage Safety (AC)	198-264V-10%-+10%
Number of Products on MCB (16A Type B) (Nom)	28	Earth Leakage Current (Max)	0.5 mA
Automatic Restart	Yes	Inrush Current Width	0.35 ms
Operating and Electrical		Ballast Factor (Nom)	1.05
Input Voltage	220 to 240 V	Power Losses (Nom)	3.8 W
Input Frequency	50 to 60 Hz	Inrush Current Peak (Max)	18 A
Operating Frequency (Nom)	45 kHz	Efficiency at full load [%]	88.98 %
Crestfactor (Nom)	1.7	Wiring	
		Connector Type Input Terminals	WAGO 744 connector
		Cable Capacity Output Wires Mutual (Max)	200 pF

## HF-Selectalume II for TL-D lamps

Connector Type Output Terminals	WAGO 744 connector [ Suitable for manual wiring]
Cable Length Hot Wiring	0.75 m
Wire Striplength	8.0-9.0 mm
Dual Fixture Master/Slave	Possible, lamp wires 2m max. length [ Master/Slave operation possible]
Input Terminal Cross Section	0.50-1.50 mm <sup>2</sup>
Output Terminal Cross Section	0.50-1.50 mm <sup>2</sup>
Cable Capacity Cold Output Wires - Earth (Max)	200 pF
Cable Capacity Hot Output Wires - Earth (Max)	200 pF

### System characteristics

Rated Ballast-Lamp Power	36 W
Rated Lamp Power on TL-D	36 W
System Power on TL-D	38.8 W
Lamp Power on TL-D	35 W
Power Loss on TL-D	3.8 W

### Temperature

T-Ambient (Max)	55 °C
T-Ambient (Min)	-20 °C
T-Storage (Max)	80 °C
T-Storage (Min)	-40 °C
T-Case Lifetime (Nom)	75 °C
T-Case Maximum (Max)	75 °C

### Mechanical and Housing

Housing	L 280x30x28
---------	-------------

### Emergency Operation

Nominal Light Output After 60 Seconds	100% of EBLF
---------------------------------------	--------------

Normal Operating Voltage (DC)	220-240 V
Battery Voltage Guaranteed Operation	176-275 V
Battery Voltage Guaranteed Ignition	186-275 V
Emergency Ballast Lumen Factor (EBLF) (Nom)	100 %
Nominal Light Output After 5 Seconds	50% of EBLF

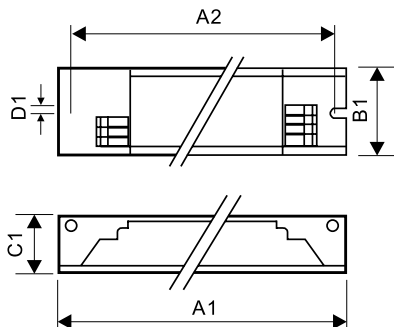
### Approval and Application

Energy Efficiency Index	A2 BAT
IP Classification	IP 20 [ Ingress Protection 20]
EMI 9 kHz ... 30 MHz	EN55015
Vibration Standard	IEC68-2-6 F c
Bumps Standard	IEC 68-2-29 Eb (10G/16ms)
Approval Marks	F-Marking CE marking ENEC certificate CCC certificate C-Tick certificate PSB certification TISI marking SIRIM approval CB Certificate CCC certificate VDE-EMV certificate
Hum And Noise Level	< 30 dB(A)

### Product Data

Full product code	872790090551900
Order product name	HF-S 118/136 TL-D II 220-240V 50/60Hz
EAN/UPC - Product	8711500999290
Order code	913713032166
Numerator - Quantity Per Pack	1
Numerator - Packs per outer box	12
Material Nr. (12NC)	913713032166
Net Weight (Piece)	0.200 kg

## Dimensional drawing



HF-S 136 TL-D II 220-240V 50/60Hz

### Product

HF-S 118/136 TL-D II 220-240V 50/60Hz

## HF-Selectalume II for TL-D lamps

