



Flue gas analyser MAXILYZER NG

- Robust housing, dust- and water-tight, with vent valve
- Sensor equipment with up to six measuring cells possible
- Flushing function, depending on intensity of measurement
- Powerful battery (24 hours of operation with active display backlit function)
- Integrated printer



Page 638

Application Universal application for measuring small and medium-sized oil, gas and pellets fired heating systems according to the German Federal Immission Act and for CO concentration safety checks at gas fired systems. The gas treatment system MAXISYSTEM is required for precise gas analyses during long-term measurements or at different sites subject to pollution and condensate in the flue gas.

Description Flue gas analyser with integrated thermal printer and dual-stage gas treatment system (condensate filter cartridge and dust filter cartridge) in plastic housing with dust and splash water protection. A graphical, bright, backlit LC display allows for indication of ten measured values. Hold and zoom functions, core search, 15-minute mean value program (solid fuels), conversion of units, automatic instrument check during program start and graphical evaluation of the measured values with combustion chart ensure maximum ease of use. Memory for 100 measurement blocks. With sensor status diagnostics and automatic CO flushing function via a second pump to protect the sensors. MAXILYZER NG can be equipped with up to six measuring cells (O₂, CO_{H2}, CO_{20,000}, NO, NO₂, SO₂). Calculated parameters: CO undiluted (air-free), lambda, CO₂, Eta efficiency, flue gas loss qA. Powerful battery with intelligent quick-charging technology.

Technical specifications

Measuring ranges (measured values)

Flue gas temperature/differential temperature
0/1,000 °C

Air temperature/combustion air temperature
-20/+200 °C

Draft
70 hPa

Differential pressure
150 hPa

O₂
0/21 % by volume

CO_{H2}
0/4,000 ppm

CO
0/20,000 ppm

NO
0/2,000 ppm

NO₂
0/200 ppm

SO₂
0/2,000 ppm

Indication (calculated values)
CO₂, CO undiluted (air-free), lambda, eta efficiency, flue gas losses qA

Operating temperature range

Ambient: 5/40 °C
Storage: -20/+50 °C

Weight (housing)
2.8 kg

Dimensions
W x H x D: 273 x 125 x 247 mm

Display
LCD, W x H: 60 x 80 mm

Protection class
IP 65 (when closed)

Connections
Draft/pressure: Ø 7 mm
Gas: Ø 8 mm

Supply voltage
NiMH battery (6 V/4,500 mAh)

Hours of operation
24 hours

Data memory
Up to 100 memory blocks

Interfaces
Bluetooth (option), USB

Approvals
BlmSchV, KÜO (TÜV ByRgG 247), EN 50379-2

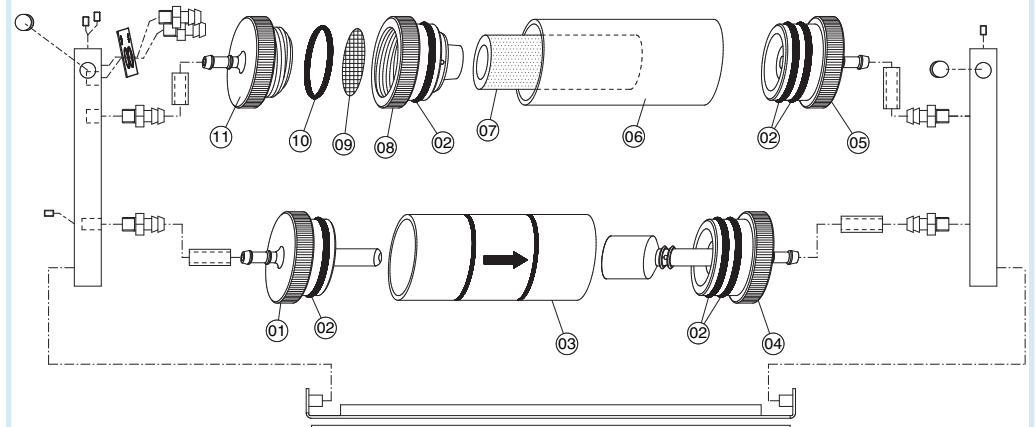


See page 636 for gas cooling and filtration with MAXISYSTEM.

Scope of delivery

Maxilyzer NG with max. 6 cells (O₂, CO_{H2}, CO_{20,000}, NO, NO₂, SO₂), calibration report, case with charger, ambient air probe, flue gas combination probe, connection kit for differential pressure measurement

DG: H	Part no.	Price €
MAXILYZER NG Set 1 O₂, CO/H₂, FZ-Diff O ₂ , CO _{H2} , draft, differential pressure	P04002210	
MAXILYZER NG Set 2 O₂, CO/H₂, NO, FZ-Diff O ₂ , CO _{H2} , NO, draft, differential pressure	P04003210	
MAXILYZER NG Set 3 O₂, CO/H₂, CO_{2%}, FZ-Diff O ₂ , CO _{H2} , CO _{20,000} , draft, differential pressure	P04012210	
MAXILYZER NG Set 4 O₂, CO/H₂, CO_{2%}, NO, FZ-Diff O ₂ , CO _{H2} , CO _{20,000} , NO, draft, differential pressure	P04008210	
Options: Immediate installation when instrument is ordered		
Bluetooth interface BTS-M1	569278	
Device function MGF FP-M , mean value program for solid fuels in the case of solid fuel systems	568984	
Accessories		
Maintenance contract S (annual service fee, including sensors O ₂ + CO)	579040	

Gas treatment system MAXILYZER NG/MAXILYZER NG Plus

14

DG: H	Part no.	Price €
Spare parts for gas treatment system MAXILYZER NG / MAXILYZER NG Plus		
01 Inlet piece KFP-E	520594	
02/10 Assortment of O rings for KFP	511002	
03 Glass piston KFP-GP with arrow	520596	
04 Outlet piece KFP-AZ with cylinder	522017	
05 Inlet piece KFP-EP	521954	
06 Glass piston KFP-GL with logo	521778	
07 Infiltec fine filter (5 pieces)	511003	
08 Intermediate piece KFP-Z	520592	
09 Teflon membrane (10 pieces)	511004	
11 Outlet piece KFP-A	520591	



Please enquire for other device versions.