

EPIC® H-B 10 SDR-LB

Housing design H-B. The industry standard.

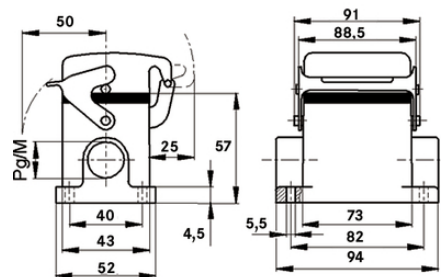
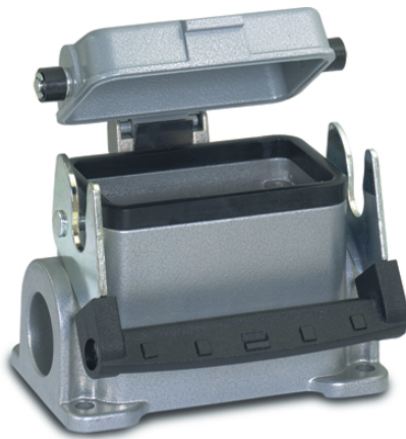
The robust universal low housing has a cable entry and a single lever and is ideal for use in the plastics industry.

Info

Single Lever version for quick locking and simple unlocking with lifting aid

Metal lid with sturdy hinge

Protection rating UL50E tested



Waterproof



Robust



Mechanical resistance



Industrial machinery and plant engineering



Automation & fältinstallation

Benefits

The smallest housing with single and double lever. The right housing is available for every application

Application range

Plant engineering

Light & sound technology

Plastics industry

EPIC® H-B 10 SDR-LB

Product features

Surface-mount base, low version
Single lever
1 cable entry
Metal cover

Technical Data

Classification:	ETIM 5.0 Class-ID: EC000437 ETIM 5.0 Class-Description: Housing for industrial connectors
Material:	Housing: powder-coated aluminium alloy, grey Lever: zinc-plated steel Sealing: NBR
Protection rating:	IP 65 (latched) NEMA 250, UL50E: 12 (latched)
VDE-tested:	Certified production control: VDE-REG. no.: B437 UL-tested: UL File Number: E75770
Temperature range:	-40°C to +100°C, short-term up to +125°C

Note

Photographs are not to scale and do not represent detailed images of the respective products.
Prices are net prices without VAT and surcharges. Sale to business customers only.



EPIC® H-B 10 SDR-LB

Article number	Article description	M	PG
H-B housing: surface-mount base (cover, 1 cable entry, single lever)			
10036900	H-B 10 SDR-LB 16	-	16
19036900	H-B 10 SDR-LB M20	20	-
79064600	H-B 10 SDR-LB M25	25	-

Last Update (05.07.2017)

©2017 Lapp Group - Technical changes reserved

Product Management www.lappkabel.de

You can find the current technical data in the corresponding data sheet.

PN 0456 / 02_03.16